

# LONSEAL<sup>®</sup>

## SPECIALTY FLOORING



AIRCRAFT



MARINE



MILITARY



SPECIALTY  
VEHICLES



EXHIBITS &  
ENTERTAINMENT



EXTERIOR  
DECKING



# ABOUT LONSEAL

Celebrating over 45 years of durability and performance in a variety of commercial industries, Lonseal® offers a unique selection of resilient sheet vinyl in exterior and interior, embossed, smooth, fitness and wood-grain surfaces. We provide finishes of exceptional beauty and utility which are economical as they are exhilarating. Servicing the unique demands of market-specific installations, from the areas of aviation and marine to emergency vehicles and entertainment stages.

Our smooth, embossed, and wood-grain finishes offer slip-resistance, sound-dampening, and cushioned step features, as well as eco-friendly and antimicrobial attributes. With unrivaled dimensional patterns that have proven themselves in countless installations, Lonseal offers a surface solution to all specialized flooring needs.

Most of the Lonseal products feature **GreenMedic®**, an antimicrobial technology formulated directly into the wear layer of the flooring. Most of the Lonseal products also feature **GreenAir®**, which is a low VOC formulation that supports Indoor Air Quality (IAQ) standards. Both GreenAir and GreenMedic are exclusive to Lonseal.

### COMPANY HISTORY:

Lonseal, Inc. is a subsidiary of Lonseal Corporation in Tokyo and was established in Southern California in 1972. The company quickly established itself as a provider of unique flooring designs with distinctive color choices. In the early 80s, Lonplate (page 13)— the original steel-plate design adapted to resilient flooring — put Lonseal on the map as a creator of innovative, embossed products. Additionally, Lonseal’s technological advances bolstered the company’s reputation as it infused products with pliable properties not associated with vinyl.



## AFFILIATIONS, CERTIFICATIONS AND MEMBERSHIPS



## EXCLUSIVE LONSEAL® FORMULATIONS



## CONTENTS

About Lonseal	Page 1
Embossed	Page 2
Smooth	Page 16



# EMBOSSED

## LONBEAD



### STUNNING PEARLESCENT

One of Lonseal's most striking offerings, LONBEAD is a luxuriously textured surface consisting of an embossing of small pearl-like drops that form a richly glossy and elegant design. The opulent color palette is timelessly chic and has enlivened numerous display and marine installations.

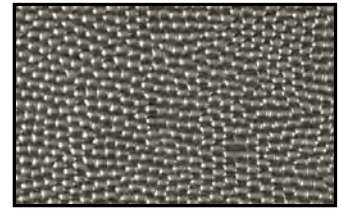
*\*Because of the light color of #301 Opal, Lonseal highly recommends the use of six coats of finish. More frequent maintenance procedures are necessary to ensure a long lasting installation.*

#### FEATURES (data shown are nominal):

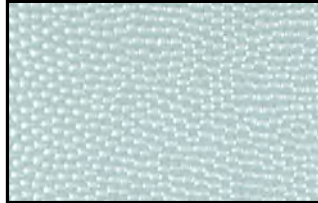
Roll Width: 6 ft. (1.8 m)  
Roll Length: 60 ft. (18.3 m)  
Overall Thickness: 0.100 in. (2.5 mm)  
Wear Layer Thickness: 0.035 in. (0.9 mm)  
Weight: 0.8 lbs./sq. ft., 275 lbs./roll



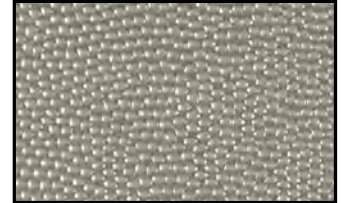
Part #: B301  
Color: 301 OPAL\*



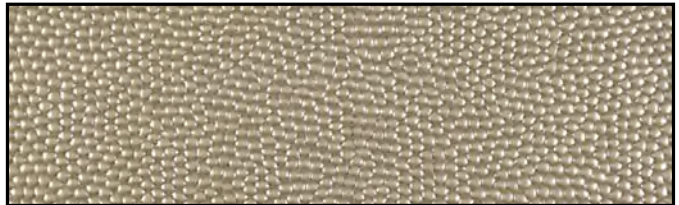
Part #: B303  
Color: 303 ONYX



Part #: B304  
Color: 304 AQUAMARINE



Part #: B305  
Color: 305 MOONSTONE



Part #: B306  
Color: 306 CHAMPAGNE GARNET

## LONCOIN I

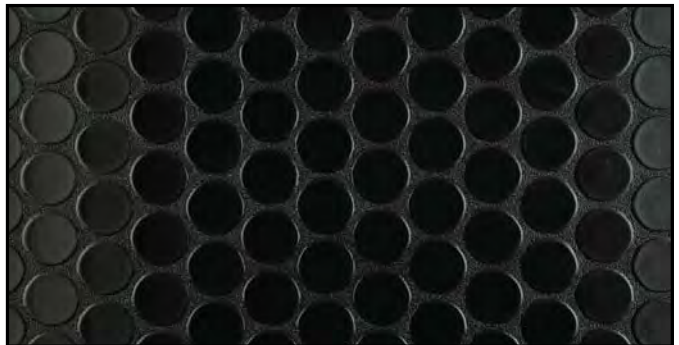


### DECORATIVE AND FUNCTIONAL

The Loncoin series boasts a coin surface embossing that delivers a striking directional design a decorative touch that provides style and enhanced traction. LONCOIN I is distinguished by a light texture around the coin shapes. It has been demonstrating its resilience in high-traffic areas for decades.

#### FEATURES (data shown are nominal):

Roll Width: 6 ft. (1.8 m)  
Roll Length: 60 ft. (18.3 m)  
Overall Thickness: 0.100 in. (2.5 mm)  
Wear Layer Thickness: 0.031 in. (0.80 mm)  
Weight: 0.8 lbs./sq. ft., 280 lbs./roll

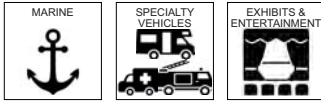


Part #: C123  
Color: 123 BLACK



Part #: C124  
Color: 124 GRAY

## LONCOIN II



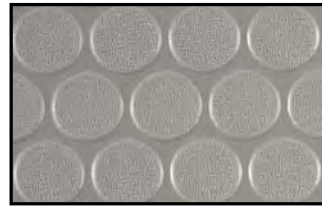
### DURABLE AND FUNCTIONAL

The Loncoin series boasts a coin surface embossing that delivers a striking directional design and a decorative touch that provides style, enhanced traction, functional, and hides scuffing. LONCOIN II features a slight texture on the coin stamping which gives surface grip and helps mask scuffing. It is available in a palette of five subdued yet arresting colors.

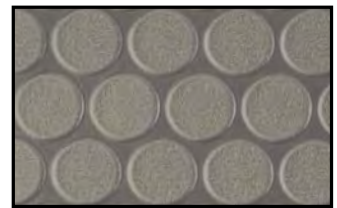
*\*#183 Sonic Gray and #187 Cerulean Blue are iridescent colors, shifting from gray to blue as the angle of the view changes. Please request a sample swatch for color accuracy.*

#### FEATURES (data shown are nominal):

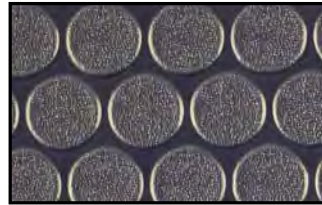
Roll Width: 6 ft. (1.8 m) or 8 ft. (2.4 m)  
 Roll Length: 60 ft. (18.3 m)  
 Overall Thickness: 0.100 in. (2.5 mm)  
 Wear Layer Thickness: 0.031 in. (0.8 mm)  
 Weight 6 ft.: 0.8 lbs./sq. ft., 295 lbs./roll  
 Weight 8 ft.: 0.8 lbs./sq. ft., 385 lbs./roll



Part #: CN181  
Color: 181 NIMBUS GRAY



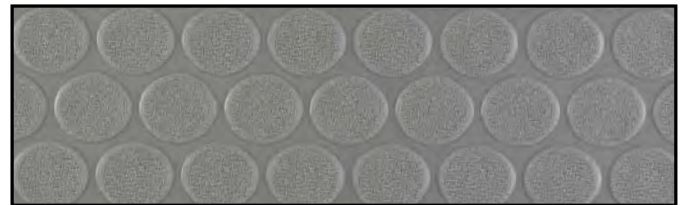
Part #: CN183  
Color: 183 SONIC GRAY\*



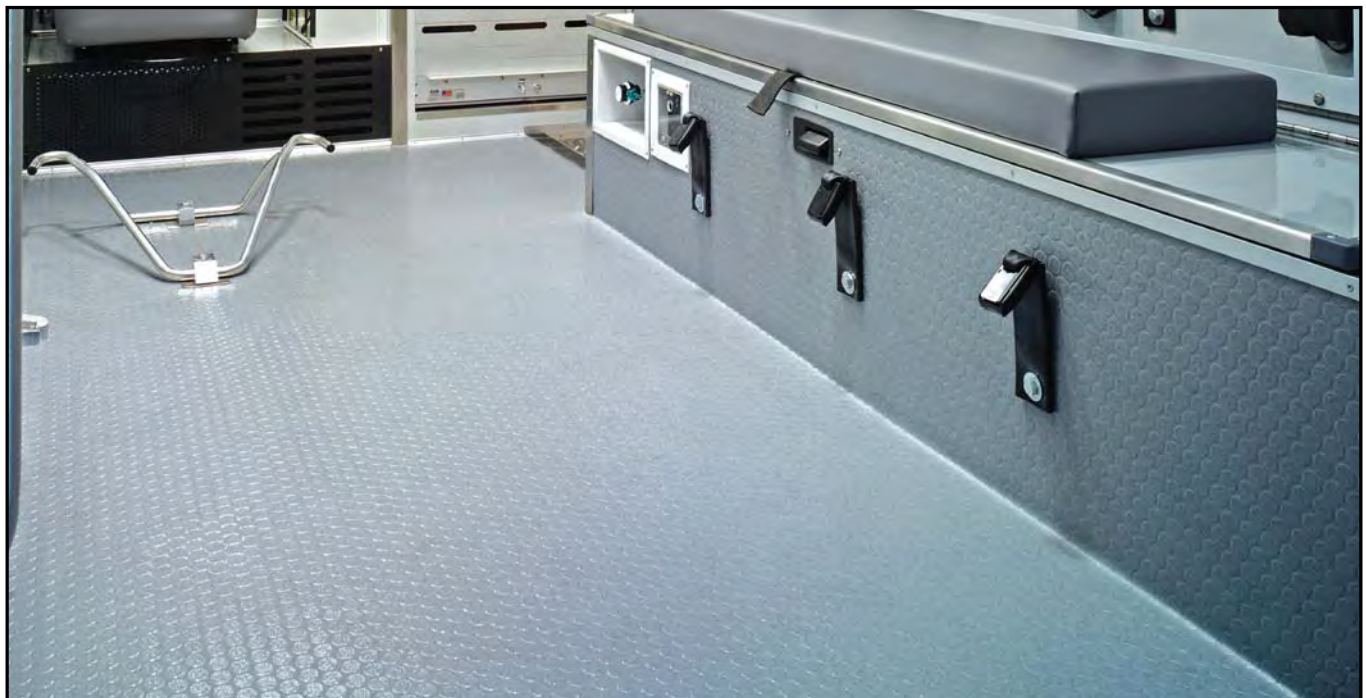
Part #: CN187  
Color: 187 CERULEAN BLUE\*



Part #: CN190  
Color: 190 BIRCH WHITE



Part #: CTB736  
Color: 736 STONE GRAY (only in 8 ft.)



LONCOIN II - 736 STONE GRAY  
NEW YORK FIRE DEPARTMENT TRUCK INTERIOR



## LONCOIN II FEATHERWEIGHT



### AXIS AIRCRAFT COLLECTION: LONCOIN II FEATHERWEIGHT

Constructed in three layers with excellent slip-resistance, sound-absorption and dimensional stability properties, LONCOIN II FEATHERWEIGHT still manages to be 30% lighter than standard NTF products, potentially increasing fuel efficiency.

*\*#9883 Sonic Gray and #9887 Cerulean Blue are iridescent colors, shifting from gray to blue as the angle of view changes. Please request a sample swatch for color accuracy.*

### MEETS FAA REQUIREMENTS

FAR 25.853(a): 12-Second Vertical Flammability

FAR 25.793: Factor of Sliding Friction

### MEETS BOEING REQUIREMENTS

D643A504

### FEATURES (data shown are nominal):

Roll Width: 6 ft. (1.8 m) or 8 ft. (2.4 m)

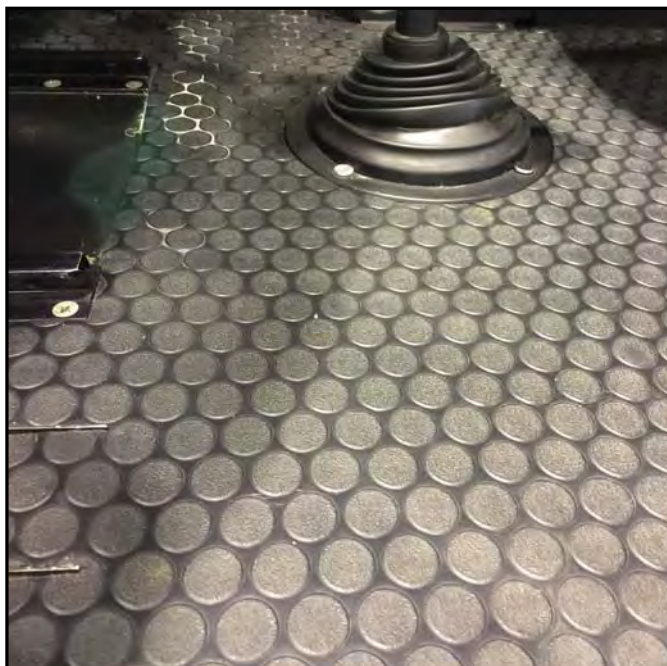
Roll Length: 60 ft. (18.3 m)

Overall Thickness: 0.091 in. (2.3 mm)

Wear Layer Thickness: 0.031 in. (0.8 mm)

Weight 6 ft.: 82 oz./sq. yd. (2780 g/m<sup>2</sup>), 220 lbs./roll

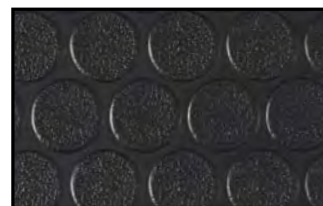
Weight 8 ft.: 82 oz./sq. yd. (2780 g/m<sup>2</sup>), 295 lbs./roll



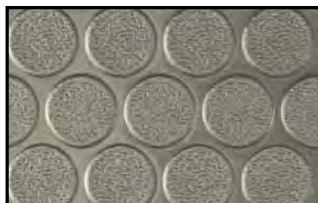
LONCOIN II FEATHERWEIGHT - 9883 SONIC GRAY  
AIRBUS HELICOPTER



Part #: C2F9822M72 (6 ft.)  
Part #: C2F9822M96 (8 ft.)  
Color: 9822 BROWN



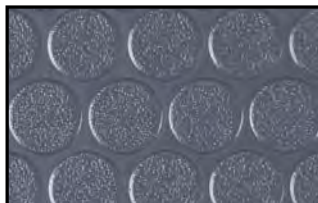
Part #: C2F9823M72 (6 ft.)  
Part #: C2F9823M96 (8 ft.)  
Color: 9823 BLACK



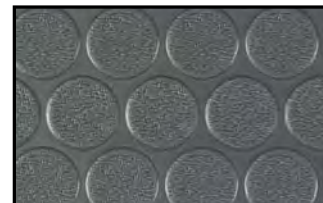
Part #: C2F9883M72 (6 ft.)  
Part #: C2F9883M96 (8 ft.)  
Color: 9883 SONIC GRAY\*



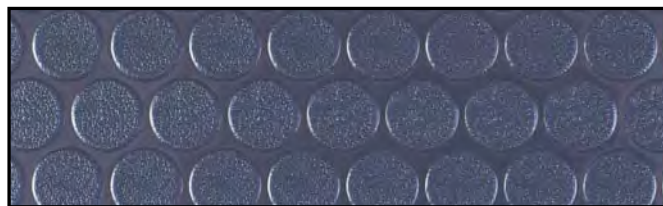
Part #: C2F9887M72 (6 ft.)  
Part #: C2F9887M96 (8 ft.)  
Color: 9887 CERULEAN BLUE\*



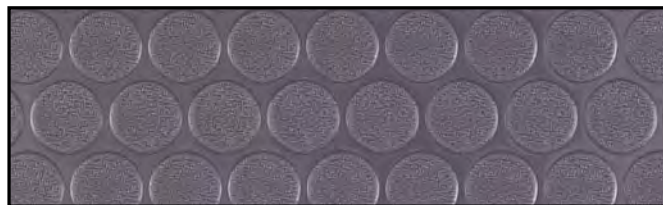
Part #: C2F9891M72 (6 ft.)  
Part #: C2F9891M96 (8 ft.)  
Color: 9891 DARK BLUE



Part #: C2F9893M72 (6 ft.)  
Part #: C2F9893M96 (8 ft.)  
Color: 9893 MEDIUM GRAY



Part #: C2F9895M72 (6 ft.)  
Part #: C2F9895M96 (8 ft.)  
Color: 9895 NAVY BLUE

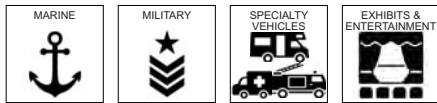


Part #: C2F9896M72 (6 ft.)  
Part #: C2F9896M96 (8 ft.)  
Color: 9896 PURPLE BLUE



Part #: C2F9899M72 (6 ft.)  
Part #: C2F9899M96 (8 ft.)  
Color: 9899 INDIGO

## LONCOIN II FLECKS



DURABLE, FUNCTIONAL, and HIDES SCUFFING

The Loncoin series boasts a coin surface embossing that delivers a striking directional design a decorative touch that provides style and enhanced traction. LONCOIN II FLECKS adds a dazzling fleck coloration that provides camouflage for easier maintenance. It has a slightly deeper embossing than Loncoin II Flecks Topseal and Loncoin II Flecks UV.

**FEATURES** (*data shown are nominal*):

Roll Width: 6 ft. (1.8 m) or 8 ft. (2.4 m)

Roll Length: 60 ft. (18.3 m)

Overall Thickness: 0.100 in. (2.5 mm)

Wear Layer Thickness: 0.031 in. (0.8 mm)

Weight 6 ft.: 0.8 lbs./sq. ft., 290 lbs./roll

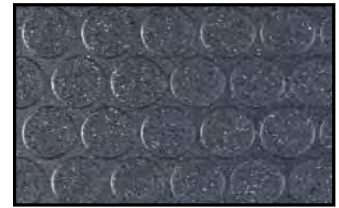
Weight 8 ft.: 0.8 lbs./sq. ft., 385 lbs./roll



Part #: C150 (6 ft.)

Part #: C8150 (8 ft.)

Color: 150 ONYX



Part #: C152 (6 ft.)

Part #: C8152 (8 ft.)

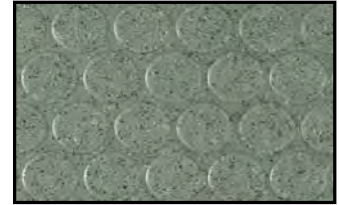
Color: 152 SAPPHIRE



Part #: C154 (6 ft.)

Part #: C8154 (8 ft.)

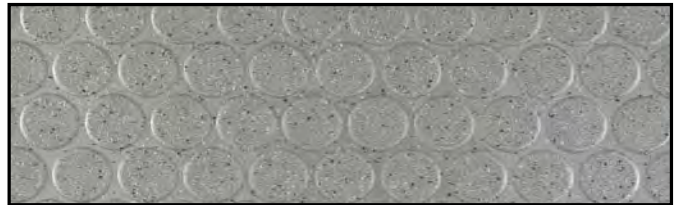
Color: 154 SANDSTONE



Part #: C155 (6 ft.)

Part #: C8155 (8 ft.)

Color: 155 JADE



Part #: C157 (6 ft.)

Part #: C8157 (8 ft.)

Color: 157 MOONSTONE

## LONCOIN II FLECKS TOPSEAL



The Loncoin series boasts a coin surface embossing that delivers a striking directional design a decorative touch that provides style and enhanced traction. LONCOIN II FLECKS TOPSEAL adds a dazzling fleck coloration that provides camouflage for easier maintenance. Topseal is Lonseal's factory-applied urethane finish that protects the floor, reduces scuffing and simplifies routine maintenance. Topseal is applied in a 15-micron wear layer and extends the life of the flooring by protecting it from wear due to staining, soiling and scuffing. It has a more matte appearance than the Loncoin II Flecks.

**MEETS FMVSS REQUIREMENTS**

FMVSS 302: Flammability of Interior Materials

**FEATURES** (*data shown are nominal*):

Roll Width: 6 ft. (1.8 m)

Roll Length: 60 ft. (18.3 m)

Overall Thickness: 0.100 in. (2.5 mm)

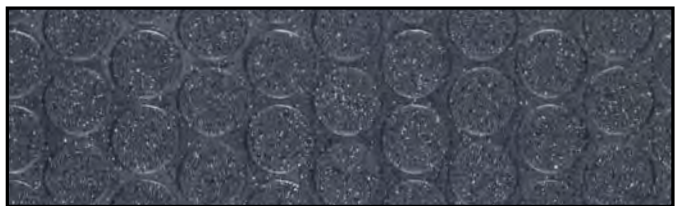
Wear Layer Thickness: 0.031 in. (0.8 mm)

Weight: 0.8 lbs./sq. ft., 295 lbs./roll



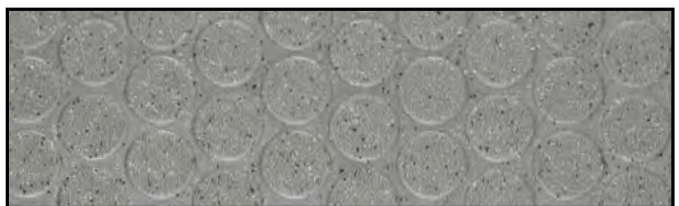
Part #: C150TS

Color: 150 ONYX TOPSEAL



Part #: C152TS

Color: 152 SAPPHIRE TOPSEAL

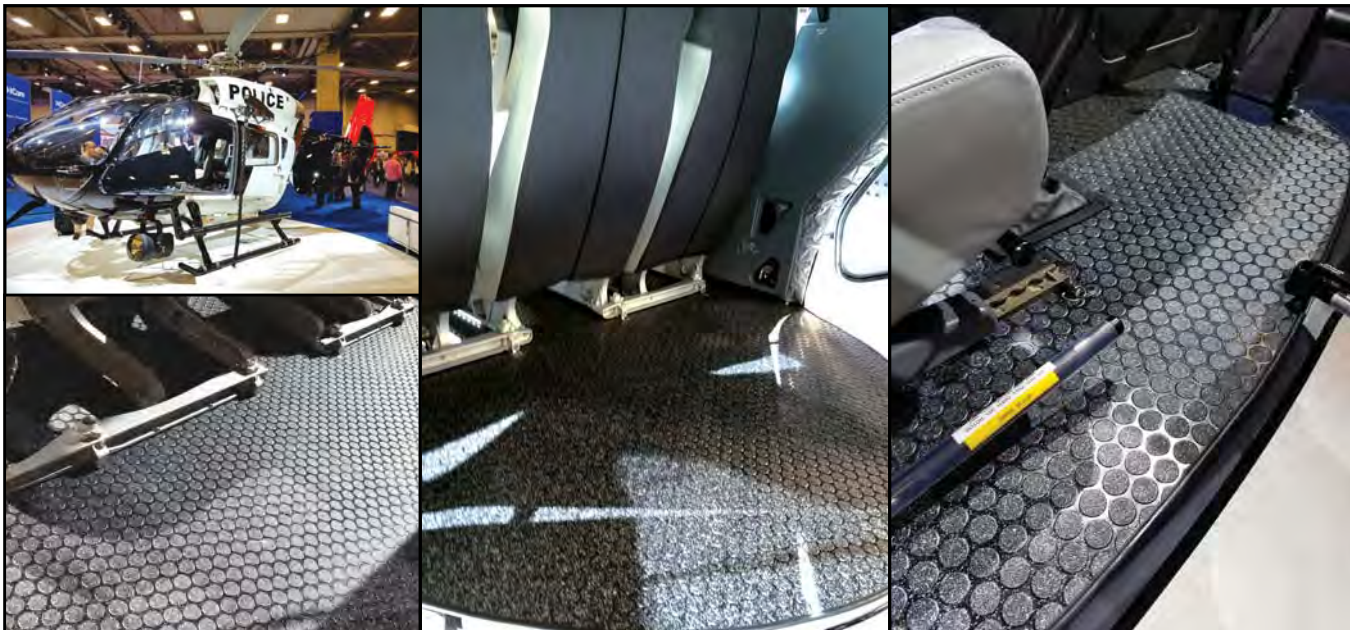


Part #: C157TS

Color: 157 MOONSTONE TOPSEAL



# EMBOSSED



LONPOLARIS - 9150 NOIR (PAGE 15)



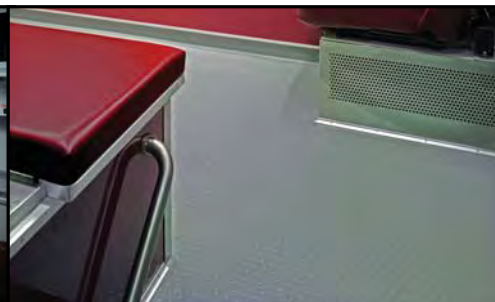
LONCOIN II FEATHERWEIGHT - 9893 MEDIUM GRAY



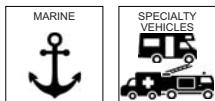
LONCOIN II FLECKS - 155 JADE



LONCOIN II FLECKS TOPSEAL - 157 MOONSTONE



## LONCOIN II FLECKS UV



The Loncoin series boasts a coin surface embossing that delivers a striking directional design a decorative touch that provides style and enhanced traction. LONCOIN II FLECKS UV adds an intriguing fleck coloration that provides camouflage and a high-gloss shine for a sparkling surface. It has a more glossy appearance than the Loncoin II Flecks.

### MEETS FMVSS REQUIREMENTS

FMVSS 302: Flammability of Interior Materials

### FEATURES (data shown are nominal):

Roll Width: 6 ft. (1.8 m)

Roll Length: 60 ft. (18.3 m)

Overall Thickness: 0.100 in. (2.5 mm)

Wear Layer Thickness: 0.035 in. (0.9 mm)

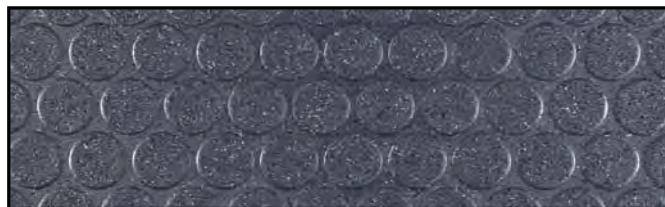
Weight: 0.8 lbs./sq. ft., 285 lbs./roll



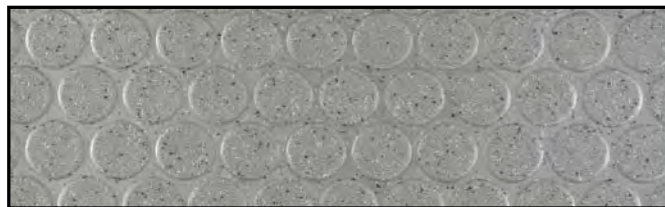
Part #: C150UV  
Color: 150UV ONYX



Part #: C151UV  
Color: 151UV CARNELIAN



Part #: C152UV  
Color: 152UV SAPPHIRE



Part #: C157UV  
Color: 157UV MOONSTONE

## LONCOMMODORE



### MED AND USCG COMPLIANT

Offering the rugged endurance of classic steel plating, this durable resilient sheet flooring is Lonseal's toughest skid-resistant vinyl. Perfect for heavy-duty applications in all kinds of spaces.



### MEETS MED 2014/90/EU Modules B&D USCG CERTIFIED

### FEATURES (data shown are nominal):

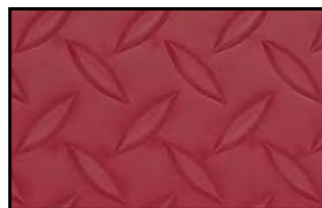
Roll Width: 6 ft. (1.8 m)

Roll Length: 60 ft. (18.3 m)

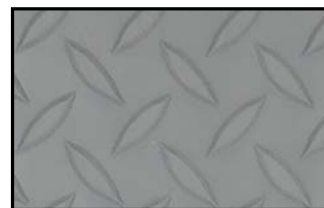
Overall Thickness: 0.140 in. (3.5 mm)

Wear Layer Thickness: 0.106 in. (2.7 mm)

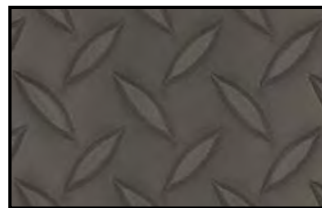
Weight: 0.8 lbs./sq. ft., 285 lbs./roll



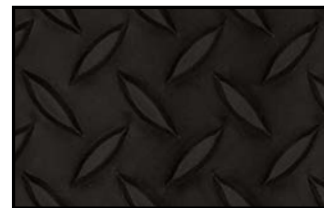
Part #: CM601  
Color: 601 POINSETTIA



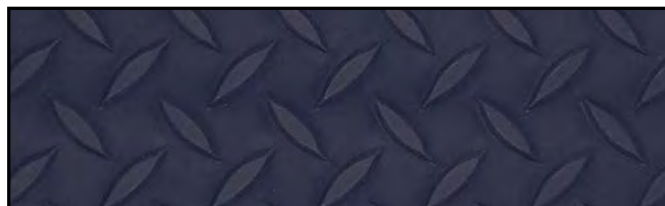
Part #: CM602  
Color: 602 SHARK SKIN



Part #: CM603  
Color: 603 OIL RUBBED BRONZE



Part #: CM604  
Color: 604 BLACK KETTLE



Part #: CM605  
Color: 605 DRESS BLUES



# EMBOSED

## LONCOMPASS



### AXIS AIRCRAFT COLLECTION: LONCOMPASS

The wider coin spacing pattern and bolder colors of Loncompass makes it an eye-catching option for both large and small spaces.

*\*9352 Denim is an iridescent color shifting from gray to blue as the angle of view changes. Please request a sample swatch for color accuracy.*

### MEETS FAA REQUIREMENTS

FAR 25.853(a): 12-Second Vertical Flammability

FAR 25.793: Factor of Sliding Friction

### FEATURES (data shown are nominal):

Roll Width: 6 ft. (1.8 m)

Roll Length: 60 ft. (18.3 m)

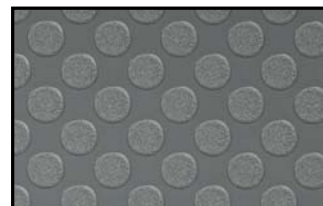
Overall Thickness: 0.091 in. (2.3 mm)

Wear Layer Thickness: 0.031 in. (0.8 mm)

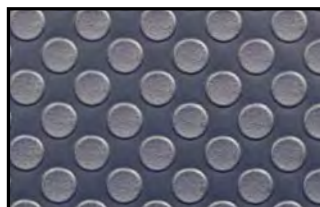
Weight: 88 oz./sq. yd. (2984 g/m<sup>2</sup>), 220 lbs./roll



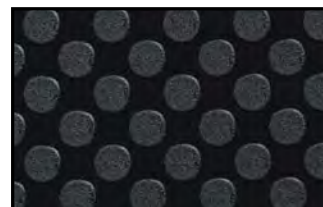
Part #: CPF9347M72  
Color: 9347 CAMEL



Part #: CPF9348M72  
Color: 9348 GRAYSTONE



Part #: CPF9352M72  
Color: 9352 DENIM\*



Part #: CPF9353M72  
Color: 9353 ASPHALT

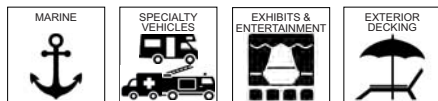


Part #: CPF9395M72  
Color: 9395 YALE BLUE



LONCOMPASS - 9395 YALE BLUE  
AIRCRAFT GALLEY

## LONDECK



HIGH TRACTION VALUE and OUTDOOR TOLERANT

Lonseal's LONDECK series features resilient exterior sheet vinyl with slightly embossed surfaces that withstand high volumes of pedestrian traffic and weather-wear. Because of its versatility, Londeck has been utilized in spaces such as pools and decks, as well as boats, EMS and other specialty vehicles. Though specifically designed for exterior spaces, the Londeck line is equally appropriate for interiors. Londeck is available in eight textured color variations.

### FEATURES (data shown are nominal):

Roll Width: 6 ft. (1.8 m)

Roll Length: 60 ft. (18.3 m)

Overall Thickness: 0.080 in. (2.0 mm)

Wear Layer Thickness: 0.031 in. (0.8 mm)

Weight: 0.6 lbs./sq. ft., 225 lbs./roll



Part #: D750  
Color: 750 TUDOR BROWN



Part #: D752  
Color: 752 FAIRMONT GREEN



Part #: D753  
Color: 753 KENSINGTON BROWN



Part #: D754  
Color: 754 PACIFIC SAND



Part #: D758  
Color: 758 PHILIPSBURG BLUE



Part #: D759  
Color: 759 BRIARWOOD



Part #: D771  
Color: 771 SHAKER BEIGE



Part #: D776  
Color: 776 DARTMOUTH GRAY

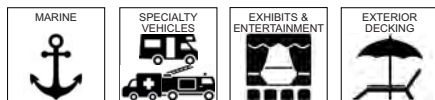


LONDECK - 776 DARTMOUTH GRAY  
BEACH HOTEL



# EMBOSSED

## LONDECK SIERRA



HIGH TRACTION VALUE and OUTDOOR TOLERANT

LONDECK SIERRA features a unique crevassed texture and comes in six earthy tones. It is part of Lonseal's Londeck series of resilient exterior sheet vinyl with slightly embossed surfaces that withstand high volumes of pedestrian traffic and weather-wear. Because of its versatility, Londeck has been utilized in spaces such as pools and decks, as well as boats, EMS and other speciality vehicles.

*\*Please note that #D8721 Sierra Cliff Face and #D8723 Mount Tan are available in both 6 foot (1.83 m) and a width of 102" (8 foot with 2-1/2 selvage product per edge). All other colors are available in 6 foot (1.83 m) rolls only unless custom ordered.*

FEATURES (data shown are nominal):

Roll Width: 6 ft. (1.8 m) or 8 ft. (2.4 m)

Roll Length: 60 ft. (18.3 m)

Overall Thickness: 0.080 in. (2.0 mm)

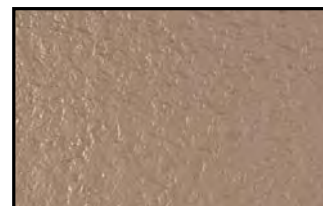
Wear Layer Thickness: 0.031 in. (0.8 mm)

Weight 6 ft.: 0.6 lbs./sq. ft., 210 lbs./roll

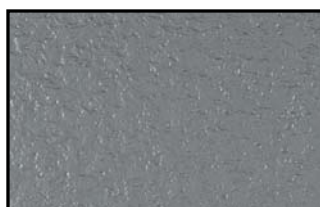
Weight 8 ft.: 0.6 lbs./sq. ft., 400 lbs./roll



Part #: D721 (D8721\*)  
Color: 721 CLIFF FACE



Part #: D723 (D8723\*)  
Color: 723 MOUNT TAN



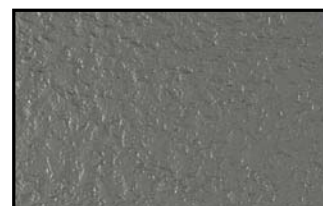
Part #: D725  
Color: 725 SIERRA STONE



Part #: D726  
Color: 726 FAIRMONT GREEN



Part #: D727  
Color: 727 PLATINUM



Part #: D729  
Color: 729 TITANIUM

## LONDECK SOL



COOL TOUCH TECHNOLOGY

As part of Lonseal's exterior flooring series, LONDECK SOL is a resilient exterior sheet vinyl with a cool-touch technology that reflects the sun's rays and reduces the surface temperature up to 10%. Londeck Sol exhibits a leather grain pattern. It withstands high volumes of pedestrian traffic and weather-wear. Because of its versatility, Londeck Sol has been utilized in spaces such as pools and decks, as well as boats, EMS and other speciality vehicles.

***Londeck Sol is available in a width of 102" (8 foot with 2-1/2 selvage product per edge).***

FEATURES (data shown are nominal):

Roll Width: 8 ft. 6 in. (2.6 m)

Roll Length: 60 ft. (18.3 m)

Overall Thickness: 0.080 in. (2.0 mm)

Wear Layer Thickness: 0.031 in. (0.8 mm)

Weight: 0.6 lbs./sq. ft., 295 lbs./roll



Part #: D991  
Color: 991 CLAY DUST



Part #: D992  
Color: 992 OVERCAST

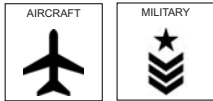


Part #: D993  
Color: 993 PURE EARTH



Part #: D994  
Color: 994 DESERT KHAKI

## LONFORCE



LONFORCE maintains the look of Lonplate II with a diamond plate texture, yet goes it one better with its rugged construction. Lonforce features embossing that lessens the probability of slippage and provides excellent durability against wear.

## MEETS FAA REQUIREMENTS

FAR 25.853(a): 12-Second Vertical Flammability

FEATURES *(data shown are nominal):*

Roll Width: 6 ft. (1.8 m)

Roll Length: 60 ft. (18.3 m)

Overall Thickness: 0.120 in. (3.0 mm)

Weight: 104 oz./sq. yd. (3526 g/m<sup>2</sup>), 260 lbs./roll



Part #: P400  
Color: 400 AIR FORCE BLUE

## DIAMOND PLATE COMPARISON

LONFORCE

LONPLATE II

LONPLATE I

LONPLATE PATINA

LONCOMMODORE





# EMBOSSED

## LONPEARL



DURABLE WITH A UNIQUE PEARLESCENT DESIGN

The studded embossing and deeply saturated colors of LONPEARL offer a stylishly textured surface with excellent camouflaging capabilities. Perfect for high-traffic areas as well as spaces in search of a dynamic statement.

*\*Due to the light color of #714 Arctic White, more frequent maintenance procedures are necessary to ensure a long lasting installation. In addition, areas of prolonged UV exposure should be avoided to prevent unwanted discoloration of the flooring.*

FEATURES (data shown are nominal):

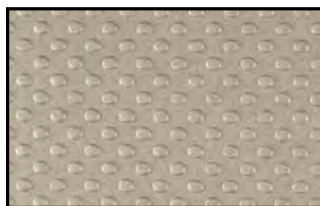
Roll Width: 6 ft. (1.8 m)

Roll Length: 60 ft. (18.3 m)

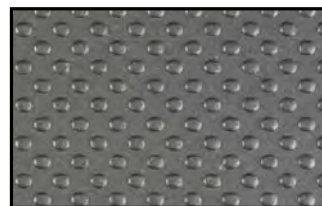
Overall Thickness: 0.100 in. (2.5 mm)

Wear Layer Thickness: 0.031 in. (0.8 mm)

Weight: 0.9 lbs./sq. ft., 310 lbs./roll



Part #: P712  
Color: 712 CASPIAN MIST



Part #: P713  
Color: 713 BALEEN GRAY



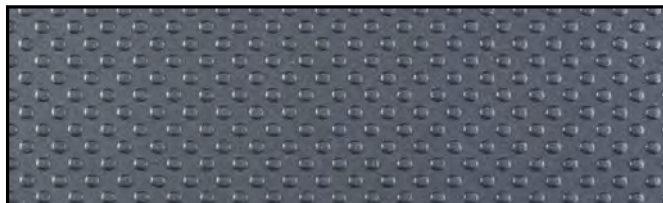
Part #: P714  
Color: 714 ARCTIC WHITE\*



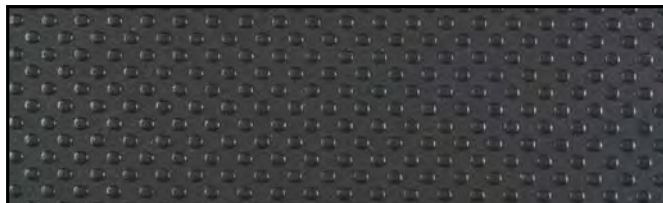
Part #: P715  
Color: 715 ABALONE GREEN



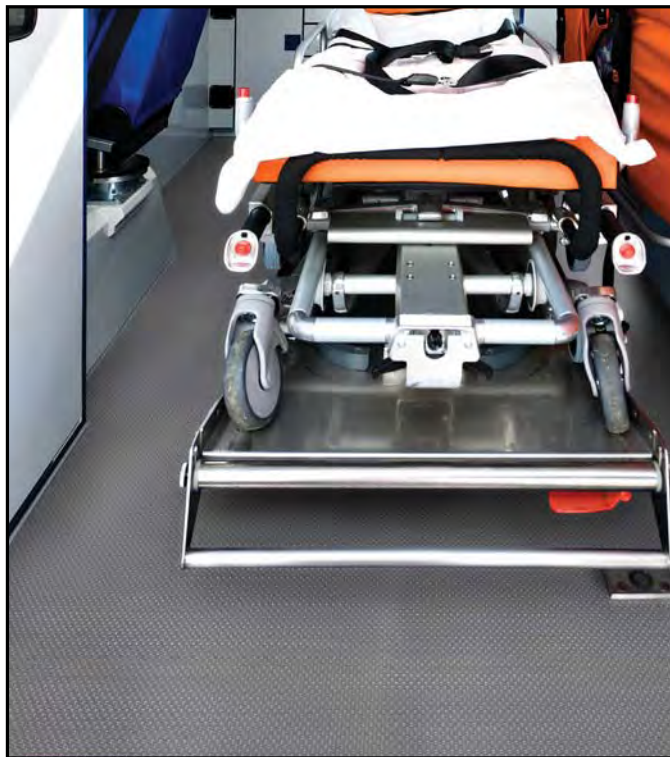
Part #: P716  
Color: 716 MARLIN SILVER



Part #: P717  
Color: 717 ORCA BLUE



Part #: P718  
Color: 718 ODESSA BLACK



LONPEARL - 716 MARLIN SILVER  
EMERGENCY VEHICLE

## LONPLATE I



### WHAT STARTED IT ALL FOR LONSEAL®

The original LONPLATE I offers the rugged endurance of classic steel plating, this durable resilient sheet flooring is Lonseal's toughest skid-resistant vinyl - perfect for heavy-duty applications in all kinds of interior spaces.

#### FEATURES (data shown are nominal):

Roll Width: 6 ft. (1.8 m)

Roll Length: 60 ft. (18.3 m)

Overall Thickness: 0.140 in. (3.5 mm)

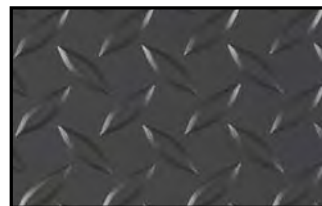
Wear Layer Thickness: 0.106 in. (2.7 mm)

Wear Layer Thickness **for 168 Titanium only**: 0.031 in. (0.8 mm)

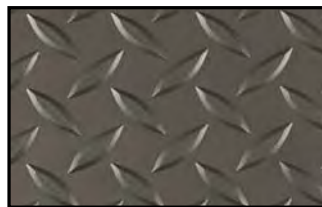
Weight: 0.8 lbs./sq. ft., 275 lbs./roll



Part #: P161  
Color: 161 METALLIC GRAY



Part #: P163  
Color: 163 BLACK



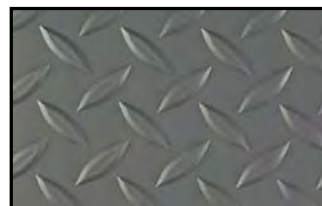
Part #: P164  
Color: 164 GUNMETAL



Part #: P165  
Color: 165 SAPPHIRE



Part #: P168  
Color: 168 TITANIUM



Part #: P176  
Color: 176 PEWTER

## LONPLATE II



### EXTREME DURABILITY

Every bit as tough as the original but with smaller embossing and wider spacing, LONPLATE II offers a similar steel-plate pattern that combines the durability of industrial design with six rich, saturated colors.

#### FEATURES (data shown are nominal):

Roll Width: 6 ft. (1.8 m) or 8 ft. (2.4 m)

Roll Length: 60 ft. (18.3 m)

Overall Thickness 6 ft.: 0.120 in. (3.0 mm)

Overall Thickness 8 ft.: 0.100 in. (2.5 mm)

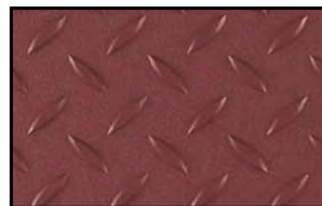
Wear Layer Thickness: 0.059 in. (1.5 mm)

Weight 6 ft.: 0.8 lbs./sq. ft., 285 lbs./roll

Weight 8 ft.: 0.6 lbs./sq. ft., 295 lbs./roll



Part #: P411  
Color: 411 PUTTY



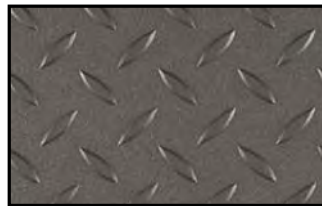
Part #: P419TX  
Color: 419 TX BRICK



Part #: P421 (6') / P8421 (8')  
Color: 421 (6') / 8421 (8') MICA



Part #: P424  
Color: 424 GUNMETAL



Part #: P424TX (6') / P8424TX (8')  
Color: 424 TX (6') / 8424 TX (8') GUNPOWDER



Part #: P443TXM (6') / P8443TXM (8')  
Color: 443 TX M (6') / 8424 TXM (8') MIDNIGHT



# EMBOSSED

## LONPLATE PATINA



### INDUSTRIAL ROMANCE

LONPLATE PATINA is resilient sheet vinyl surface with high-tech metallic coloring and a classic diamond plate embossing. The exclusive galvanized coloration provides excellent camouflage for scuffing and wear pairing the aesthetics of iron with ease of vinyl maintenance. Great for providing a high-tech industrial look.

#### FEATURES (data shown are nominal):

Roll Width: 6 ft. (1.8 m)

Roll Length: 60 ft. (18.3 m)

Overall Thickness: 0.140 in. (3.5 mm)

Wear Layer Thickness: 0.031 in. (0.8 mm)

Weight: 0.8 lbs./sq. ft., 305 lbs./roll



Part #: P537  
Color: 537 PALACE GRAY



Part #: P538  
Color: 538 EMPIRE SILVER

## LONPOINT MOONWALK



### UNIQUE, FASHIONABLE COIN PATTERN

LONPOINT MOONWALK is similar to our Loncoin series, but is distinguished by smaller (half-inch diameter) and more widely-spaced coin stamping. The slip-resistance feature makes it ideal for busy traffic areas, while the intriguing color scheme adds a distinctive designer touch.

*\*#352 Sapphire and #354 Graphite are iridescent colors, shifting from gray to blue as the angle of the view changes. Please request a sample swatch for color accuracy.*

#### FEATURES (data shown are nominal):

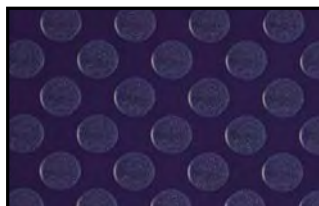
Roll Width: 6 ft. (1.8 m)

Roll Length: 60 ft. (18.3 m)

Overall Thickness: 0.08 in. (2.00 mm)

Wear Layer Thickness: 0.031 in. (0.08 mm)

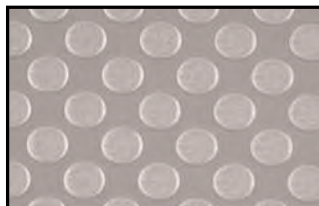
Weight: 0.7 lbs./sq. ft., 240 lbs./roll



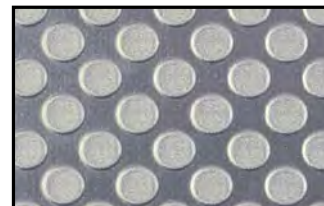
Part #: P345  
Color: 345 BLUE



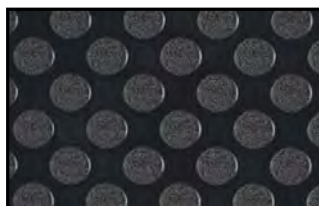
Part #: P348  
Color: 348 SLATE



Part #: P351  
Color: 351 PLATINUM



Part #: P352  
Color: 352 SAPPHIRE\*



Part #: P353  
Color: 353 BLACK



Part #: P354  
Color: 354 GRAPHITE\*

## LONPOLARIS



### AXIS AIRCRAFT COLLECTION: LONPOLARIS

The multi-colored fleck patterns in Lonpolaris add a unique sense of style to the coin embossing that also helps mask routine dirt and scuffing.

#### MEETS FAA REQUIREMENTS

FAR 25.853(a): 12-Second Vertical Flammability

FAR 25.793: Factor of Sliding Friction

#### FEATURES (data shown are nominal):

Roll Width: 8 ft. (2.4 m)

Roll Length: 60 ft. (18.3 m)

Overall Thickness: 0.091 in. (2.3 mm)

Wear Layer Thickness: 0.031 in. (0.8 mm)

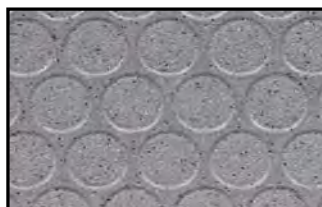
Weight: 84 oz./sq. yd. (2848 g/m<sup>2</sup>), 280 lbs./roll



Part #: PLF9150M96  
Color: 9150 NOIR



Part #: PLF9154M96  
Color: 9154 TUSCAN TAN



Part #: PLF9157M96  
Color: 9157 ROMAN SILVER



Part #: PLF9193M96  
Color: 9193 RAIN



Part #: PLF9195M96  
Color: 9195 CAROLINA BLUE

## LONRIDGE



Boasting a unique cross-hatch embossing design, LONRIDGE has all the slip resistance an interior or semi-exterior surface needs while also providing a neutral color palette with a dusting of speckles that help mask dirt.

**Lonridge comes exclusively in 8 ft. widths.**

#### FEATURES (data shown are nominal):

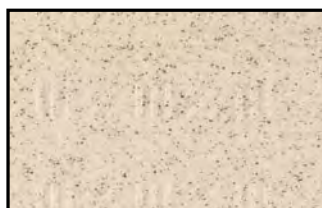
Roll Width: 8 ft. (2.4 m)

Roll Length: 60 ft. (18.3 m)

Overall Thickness: 0.100 in. (2.5 mm)

Wear Layer Thickness: 0.031 in. (0.8 mm)

Weight: 0.5 lbs./sq. ft., 255 lbs./roll



Part #: DR800  
Color: 800 CREME



Part #: DR801  
Color: 801 SMOKY BLACK



Part #: DR802  
Color: 802 RUSSET



Part #: DR803  
Color: 803 MOCCASIN



Part #: DR804  
Color: 804 MOONDUST



Part #: DR805  
Color: 805 YALE BLUE



# SMOOTH

## LONCOURT I



### RESISTS INDENTATION

LONCOURT I is specifically designed for interior sport facilities where outstanding resilience, durability and low maintenance are desired. It boasts sound-absorbing construction, simple installation and ease of maintenance, and is excellent for interior gymnasium, multi-purpose fitness room environments, commercial and institutional use. Loncourt I also meets all NCAA requirements for bounce, can hold up to the impact of retractable bleachers, and accepts painted game lines and graphics.

#### FEATURES (data shown are nominal):

Roll Width: 6 ft. (1.8 m)

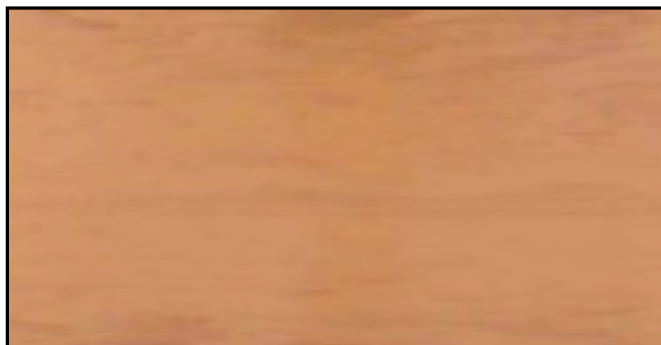
Roll Length: 50 ft. (15.2 m)

Overall Thickness: 0.190 in. (4.8 mm)

Wear Layer Thickness:

0.031 in. (0.8 mm) - 1, 0.020" (0.5 mm) - CT38

Weight: 1.6 lbs./sq. ft., 470 lbs./roll



Part #: COURT1  
Color: 1 MAPLE



Part #: CT38  
Color: 38 BUCKWHEAT

## LONCOURT UV



### DURABLE, FUNCTIONAL & RESISTS INDENTATION

LONCOURT UV pairs the durability and aesthetics of the original Loncourt flooring with a factory-applied urethane finish for easier maintenance. This reduces the lifetime cost of the floor by eliminating the need to reapply coats of finish over time.

#### FEATURES (data shown are nominal):

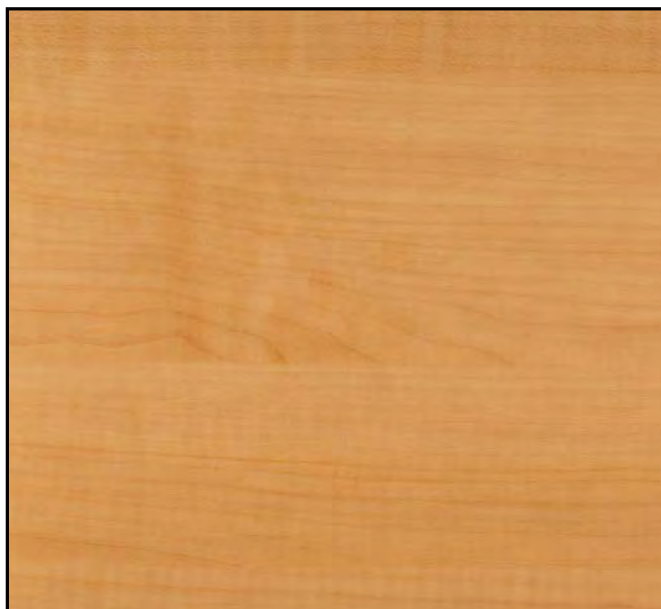
Roll Width: 6 ft. (1.8 m)

Roll Length: 50 ft. (15.2 m)

Overall Thickness: 0.190 in. (4.8 mm)

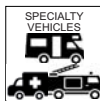
Wear Layer Thickness: 0.024 in. (0.6 mm)

Weight: 1.6 lbs./sq. ft., 485 lbs./roll



Part #: CT838UV  
Color: 838 BUCKWHEAT

## LONDANTE TOPSEAL



PHTHALATE FREE

Featuring one of the warmest yet boldest palettes that Lonseal has ever offered, LONDANTE is a resilient sheet vinyl that comes in seven intriguing colors and features a hypnotic cross-hatch pattern that imparts a distinctly Italian flavor to any interior space. Londante is phthalate free and also features Lonseal's exclusive Topseal formulation. Topseal is Lonseal's factory-applied urethane finish that protects the floor, reduces scuffing and simplifies routine maintenance. Topseal is applied in a 30-micron wear layer and extends the life of the flooring by protecting it from wear due to staining, soiling and scuffing.

**FEATURES** (*data shown are nominal*):

Roll Width: 6 ft. (1.8 m)

Roll Length: 60 ft. (18.3 m)

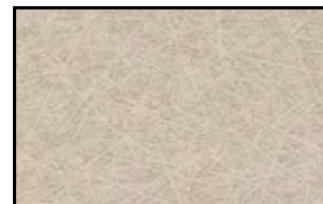
Overall Thickness: 0.08 in. (2.0 mm)

Wear Layer Thickness: 0.02 in. (0.5 mm)

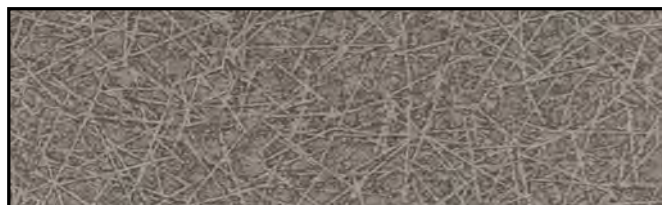
Weight: 0.7 lbs./sq. ft., 240 lbs./roll



Part #: LD200  
Color: 200 LATTE



Part #: LD201  
Color: 201 BLANCA



Part #: LD202  
Color: 202 TEMPESTA



Part #: LD203  
Color: 203 CELESTE



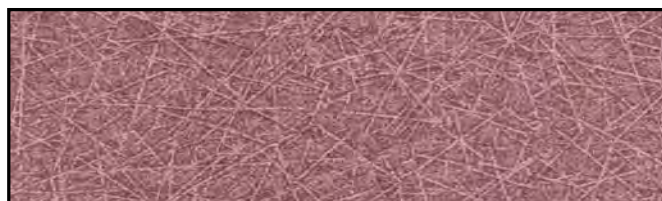
LONDANTE - 200 LATTE



Part #: LD204  
Color: 204 TERRACOTTA



Part #: LD205  
Color: 205 VERDE



Part #: LD206  
Color: 206 VIOLA



# LONSEAL SPECIALTY FLOORING



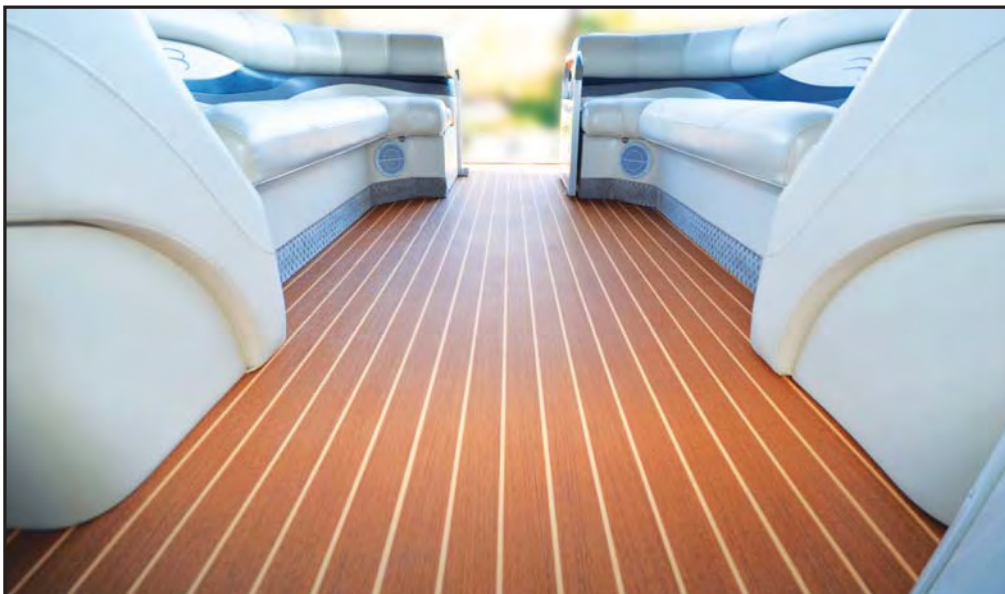
LONWOOD NATURAL TOPSEAL - 7457 BUCKWHEAT  
MOBILE TRAILER UNIT



LONRIDGE - 805 YALE BLUE



LONSTAGE UV - 100 SHINY WHITE



LONWOOD MARINE - 74TS TEAK & HOLLY TOPSEAL



LONCOIN II FEATHERWEIGHT - 881 NIMBUS GRAY (CUSTOM COLOR)  
MEDICAL HELICOPTER





LONMARINE® WOOD - 377 WALNUT & HOLLY  
MOL FERRY - SUNFLOWER FRANO - SUPERIOR CABIN



LONSAND - 833 MOCCASIN



# SMOOTH

## LONDURA FEATHERWEIGHT



LONDURA FEATHERWEIGHT is slip resistant safety sheet flooring that offers a smooth multi-polymer matrix featuring wet-traction without using crude, abrasive particles.

### MEETS FAA REQUIREMENTS

FAR 25.853(a): 12-Second Vertical Flammability

FAR 25.793: Factor of Sliding Friction

### FEATURES (data shown are nominal):

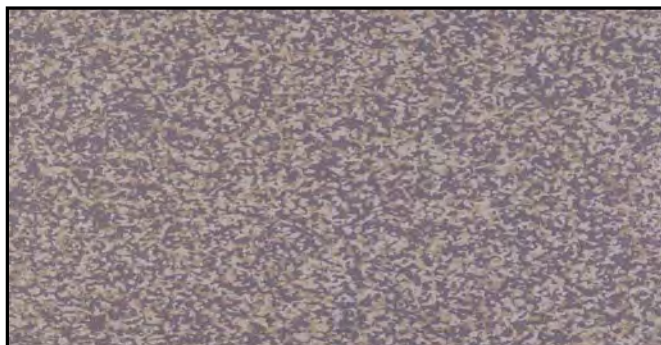
Roll Width: 6 ft. (1.8 m)

Roll Length: 60 ft. (18.3 m)

Overall Thickness: 0.080 in. (2.0 mm)

Wear Layer Thickness: 0.031 in. (0.8 mm)

Weight: 0.6 lbs./sq. ft. (3187 g/m<sup>2</sup>), 220 lbs./roll



Part #: D102FW  
Color: 102 AUTUMN MIST

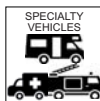


Part #: D103FW  
Color: 103 BIRDS NEST



LONDURA FEATHERWEIGHT - 102 AUTUMN MIST  
INTERIOR AIRCRAFT CABIN

## LONECO® LINEN TOPSEAL



GORGEOUS TAILORED CLASSIC LINEN PATTERN and 50% RECYCLED CONTENT.

Utilizing the same formulation of 50% recycled content of Lonseal's popular Loneco® line, LONECO® LINEN, features a loose woven design that gives a hip, stylish touch to any interior space. An abstracted take on a fabric look, Loneco® Linen suggests the delicacy of cloth while its hue variations and slightly stubbed texture provide a sense of strength and durability. Loneco® Linen also features Lonseal's exclusive Topseal formulation, a factory-applied urethane finish that protects the floor and simplifies routine maintenance.

### FEATURES *(data shown are nominal):*

Roll Width: 6 ft. (1.8 m)

Roll Length: 60 ft. (18.3 m)

Overall Thickness: 0.080 in. (2.0 mm)

Wear Layer Thickness: 0.020 in. (0.5 mm)

Weight: 0.6 lbs./sq. ft., 225 lbs./roll



Part #: EL330  
Color: 330 ECRU



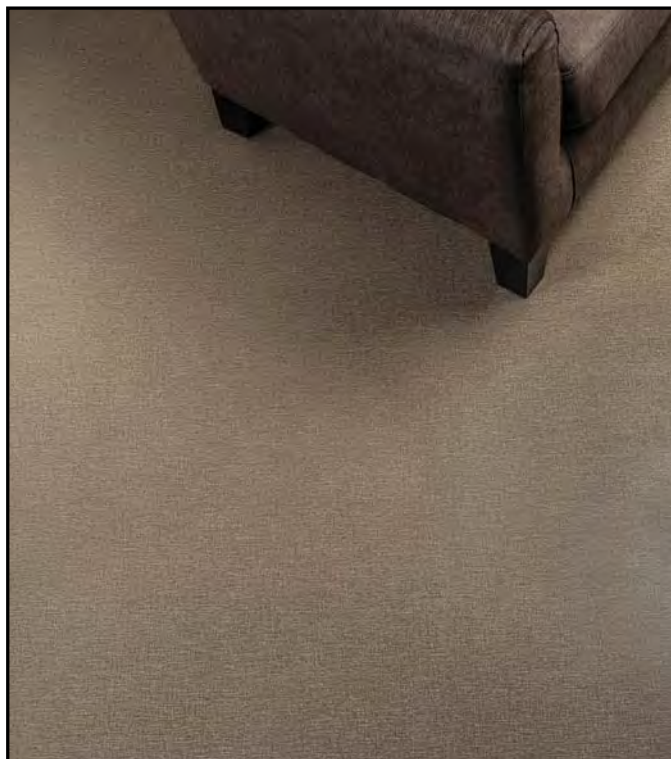
Part #: EL331  
Color: 331 OATMEAL



Part #: EL332  
Color: 332 HEATHER



Part #: EL333  
Color: 333 ASH



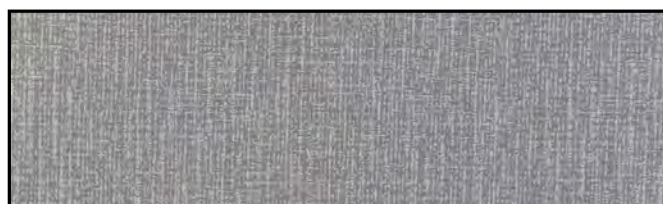
LONECO LINEN - 332 HEATHER



Part #: EL334  
Color: 334 WHEAT



Part #: EL335  
Color: 335 ARTICHOKE



Part #: EL336  
Color: 336 PORPOISE



# SMOOTH

## LONECO® TOPSEAL



CLASSIC SOLID WOOD INGRAINED and 50% RECYCLED CONTENT

As Lonseal's foremost eco-friendly product, LONECO® is composed of 50% recycled content and features Lonseal's exclusive GreenAir® technology that reduces VOC emissions and contributes to superior indoor air quality. Additionally, Loneco's organic and earthy colors easily conceal scuffing and soil. Loneco® comes standard with Lonseal's exclusive Topseal formulation, a factory-applied urethane finish that protects the floor, reduces scuffing and simplifies routine maintenance.

FEATURES *(data shown are nominal)*:

Roll Width: 6 ft. (1.8 m)

Roll Length: 60 ft. (18.3 m)

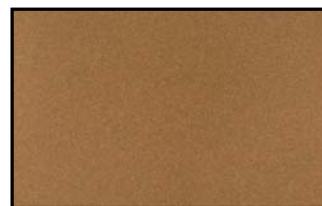
Overall Thickness: 0.080 in. (2.0 mm)

Wear Layer Thickness: 0.031 in. (0.8 mm)

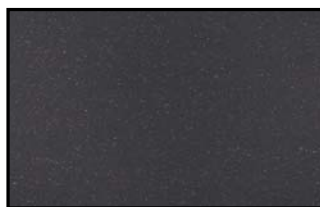
Weight: 0.6 lbs./sq. ft., 210 lbs./roll



Part #: E7211  
Color: 7211 ICE CAP



Part #: E7212  
Color: 7212 SANDALWOOD



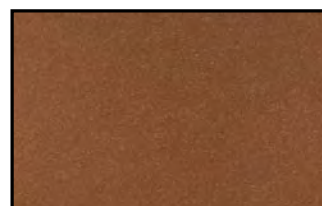
Part #: E7213  
Color: 7213 MIDNIGHT SKY



Part #: E7215  
Color: 7215 SEA COAST



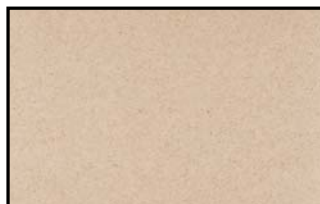
Part #: E7126  
Color: 7126 MINT



Part #: E7218  
Color: 7218 COPPER



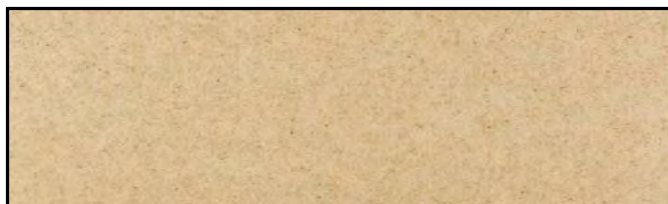
Part #: E7219  
Color: 7219 MICA



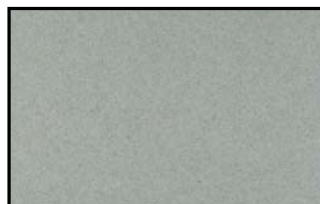
Part #: E7225  
Color: 7225 CHAMOMILE



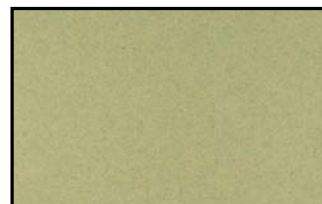
Part #: E7227  
Color: 7227 SASSAFRAS



Part #: E7228  
Color: 7228 INCENSE



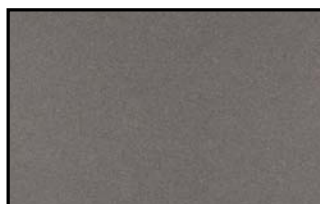
Part #: E7230  
Color: 7230 SACHET



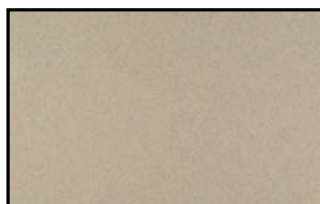
Part #: E7231  
Color: 7231 DEW DROP



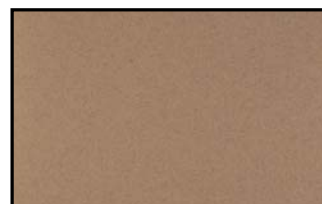
Part #: E7232  
Color: 7232 BLUEBELL



Part #: E7233  
Color: 7233 LAVENDER



Part #: E7234  
Color: 7234 SAND DUNE



Part #: E7235  
Color: 7235 ADOBE

## LONFLOOR GALVANIZED TOPSEAL



## INDUSTRIAL PEARLESCENT WITH CLEAN LINES

LONFLOOR GALVANIZED TOPSEAL lends a striking industrial touch to any specialized installation areas. The subtle color choices offer warmth while the metallic design gives a polished, sophisticated appeal. Lonseal's exclusive Topseal formulation is a factory-applied urethane finish that protects the floor, reduces scuffing and simplifies routine maintenance.

*\*Due to the light color of #7240 White Diamond, more frequent maintenance procedures are necessary to ensure a long lasting installation. In addition, areas of prolonged UV exposure should be avoided to prevent unwanted discoloration of the flooring.*

## FEATURES (data shown are nominal):

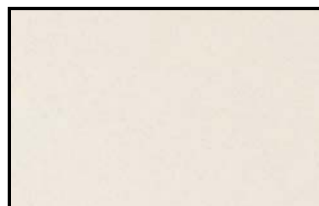
Roll Width: 6 ft. (1.8 m)

Roll Length: 60 ft. (18.3 m)

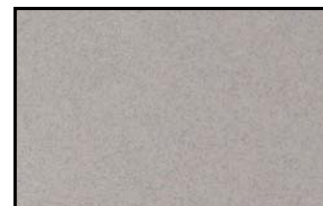
Overall Thickness: 0.080 in. (2.0 mm)

Wear Layer Thickness: 0.031 in. (0.8 mm)

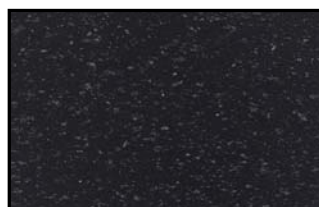
Weight: 0.6 lbs./sq. ft., 220 lbs./roll



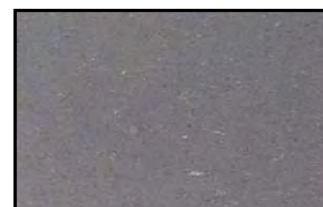
Part #: F7240  
Color: 7240 WHITE DIAMOND\*



Part #: F7241  
Color: 7241 PLATINUM



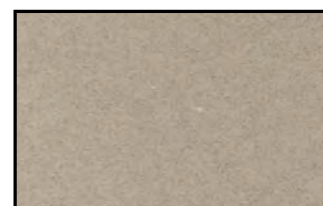
Part #: F7243  
Color: 7243 BLACK PEARL



Part #: F7244  
Color: 7244 GRAPHITE



Part #: F7247  
Color: 7247 GRANITE



Part #: F7264  
Color: 7264 BRASS

## LONFLOOR PLAIN



## DURABLE, STRONG and SIMPLE

The simplicity of LONFLOOR PLAIN's smooth-as-mercury surface and subdued color palette give it infinite application possibilities. Its classic elegance can instantly upgrade the most humble interior or put the finishing touch on any high-end space.

*\*Due to the light color of #30 Parchment, additional maintenance procedures are necessary to ensure a long lasting installation.*

## FEATURES (data shown are nominal):

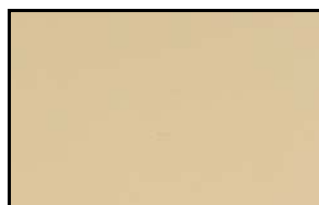
Roll Width: 6 ft. (1.8 m)

Roll Length: 60 ft. (18.3 m)

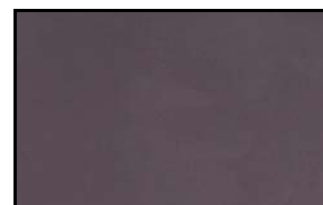
Overall Thickness: 0.100 in. (2.5 mm)

Wear Layer Thickness: 0.031 in. (0.8 mm)

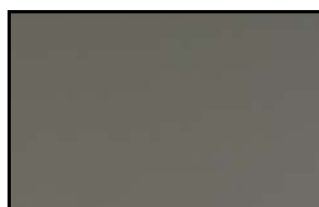
Weight: 0.7 lbs./sq. ft., 265 lbs./roll



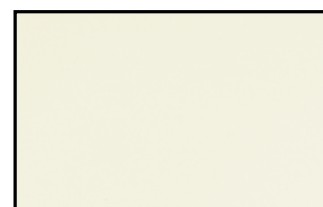
Part #: F04  
Color: 04 BUFF



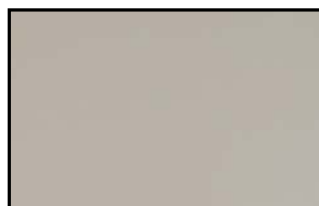
Part #: F09  
Color: 09 STONE



Part #: F25  
Color: 25 FOG



Part #: F30  
Color: 30 PARCHMENT\*



Part #: F31  
Color: 31 CONCRETE



Part #: F35  
Color: 35 NIGHT



# SMOOTH

## LONFLOOR VISTA



Available in a soft array of gentle shades, the micro-embossing of LONFLOOR VISTA brings an intriguing dimension to smooth surfaces. Lonfloor Vista's quiet appeal makes it a perfect match with our Loneco® and Lonwood collections.

*\*Due to the light color of #641 Snowfall, more frequent maintenance procedures are necessary to ensure a long lasting installation. In addition, areas of prolonged UV exposure should be avoided to prevent unwanted discoloration of the flooring.*

### FEATURES (data shown are nominal):

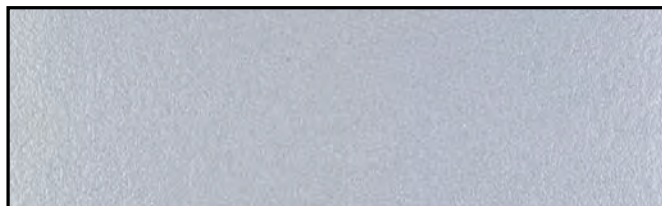
Roll Width: 6 ft. (1.8 m)

Roll Length: 60 ft. (18.3 m)

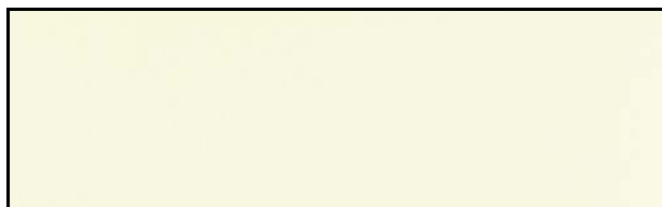
Overall Thickness: 0.080 in. (2.0 mm)

Wear Layer Thickness: 0.031 in. (0.8 mm)

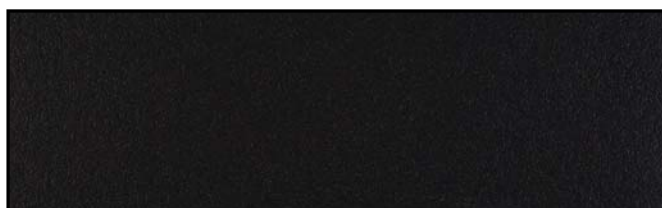
Weight: 0.7 lbs./sq. ft., 250 lbs./roll



Part #: F640  
Color: 640 TITANIUM



Part #: F641  
Color: 641 SNOWFALL\*



Part #: F643  
Color: 643 MIDNIGHT

## LONMARINE® STONE



### MED & USCG COMPLIANT

LONMARINE® STONE consists of a lightly dappled palette of neutral and gray tones that makes it a perfect fit for the interior spaces of both pleasure boats and hard-working industrial craft. The elegant marbled pattern helps mask routine scuffing that can occur with heavy foot traffic.



### MEETS MED 2014/90/EU Modules B&D USCG CERTIFIED

### FEATURES (data shown are nominal):

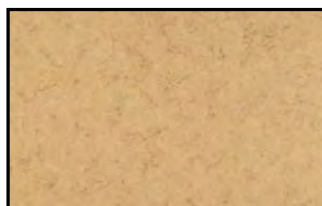
Roll Width: 6 ft. (1.8 m)

Roll Length: 60 ft. (18.3 m)

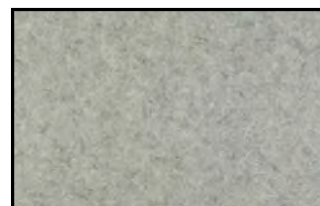
Overall Thickness: 0.080 in. (2.0 mm)

Wear Layer Thickness: 0.020 in. (0.5 mm)

Weight: 0.7 lbs./sq. ft., 250 lbs./roll



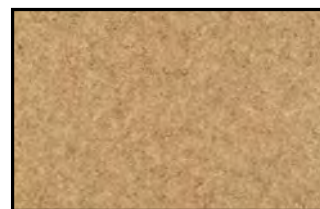
Part #: MS10  
Color: 10 DORATO



Part #: MS11  
Color: 11 GRIGIO



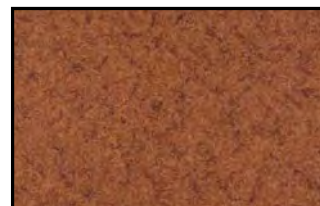
Part #: MS12  
Color: 12 MARE



Part #: MS13  
Color: 13 NOCE



Part #: MS14  
Color: 14 CARBONE



Part #: MS15  
Color: 15 RUSSO

## LONMARINE® WOOD



## MED AND USCG COMPLIANT

LONMARINE® WOOD is Lonseal's high-performance, slip-resistant marine safety flooring that has been specifically manufactured to comply with MED specifications for international markets and is USCG approved. Lonseal's marine wood looks have color coordinating trims.



**MEETS MED 2014/90/EU Modules B&D**  
**USCG CERTIFIED**

*\*Trims are not MED/USCG Certified*

## FEATURES (data shown are nominal):

Roll Width: 6 ft. (1.8 m)

Roll Length: 60 ft. (18.3 m)

Overall Thickness: 0.080 in. (2.0 mm)

Wear Layer Thickness: 0.020 in. (0.5 mm)

Weight: 0.7 lbs./sq. ft., 250 lbs./roll



Part #: ZZ05  
 Color: TRIM 05 TEAK\*



Part #: ZZ06  
 Color: TRIM 06 HOLLY\*



Part #: ZZ07  
 Color: TRIM 07 WALNUT\*



Part #: ZZ08  
 Color: TRIM 08 CHERRY\*



Part #: ZZ09  
 Color: TRIM 09 CHESTNUT\*



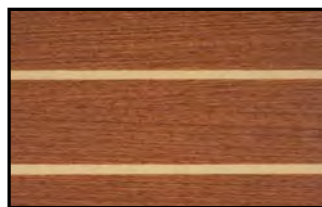
Part #: ZZ10  
 Color: TRIM 10 ANTIQUE-IVORY\*



Part #: MW370  
 Color: 370 TEAK & HOLLY



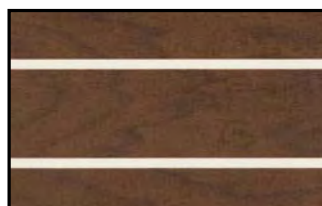
Part #: MW371  
 Color: 371 MAPLE & TEAK



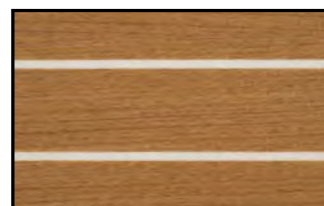
Part #: MW373  
 Color: 373 MAHOGANY & HOLLY



Part #: MW375  
 Color: 375 TEAK & EBONY



Part #: MW377  
 Color: 377 WALNUT & HOLLY



Part #: MW378  
 Color: 378 TEAK & IVORY



Part #: MW379  
 Color: 379 ANTIQUE & IVORY



Part #: MW3473  
 Color: 3473 MAHOGANY



LONMARINE® WOOD - 377 WALNUT & HOLLY  
 MOL FERRY, SUNFLOWER FRANO - GRAND BATH CHANGING ROOM



Part #: MW3475  
 Color: 3475 SOLID TEAK





LONMARINE® WOOD - 371 MAPLE & TEAK  
MOL FERRY - SUNFLOWER FRANO - GRAND BATH LADIES CHANGING ROOM



LONMARINE® STONE - 14 CARBONE



LONMARINE® STONE - 13 NOCE



LONMARINE® WOOD - 370 TEAK & HOLLY

## LONMETRO UV



BOLD, SHINY and UNIQUE

The urban flavor of LONMETRO UV fuses two colors with a UV-cured (urethane) protection layer that minimizes maintenance. Lonmetro UV shakes up the look of any space, but particularly those in display and showrooms.

*\*Due to the light color of #668 Loading Zone, additional maintenance procedures are necessary to ensure a long lasting installation. In addition, areas of prolonged UV exposure should be avoided to prevent unwanted discoloration of the flooring.*

FEATURES (data shown are nominal):

Roll Width: 6 ft. (1.8 m)

Roll Length: 60 ft. (18.3 m)

Overall Thickness: 0.080 in. (2.0 mm)

Wear Layer Thickness: 0.035 in. (0.9 mm)

Wear Layer Thickness for **668 Loading Zone only**: 0.018 in. (0.45 mm)

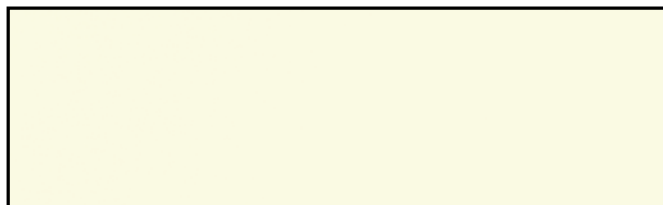
Weight: 0.6 lbs./sq. ft., 210 lbs./roll



Part #: M660UV  
Color: 660 FIRE HYDRANT

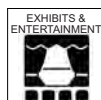


Part #: M662UV  
Color: 662 BLACK LIMO



Part #: M668UV  
Color: 668 LOADING ZONE\*

## LONMOIRE TOPSEAL



ANTIQUE ELEGANCE IN A MODERN WORLD.

PHTHALATE FREE

LONMOIRE TOPSEAL's wood grain pattern has the characteristics of watery waves of lines. This ripple design was once coveted by queens. It distinguishes the centuries-old pattern that now gives everyday commercial spaces a genteel touch. Lonmoire is phthalate free and also features Lonseal's exclusive Topseal formulation. Topseal is Lonseal's factory-applied urethane finish that protects the floor, reduces scuffing and simplifies routine maintenance. Topseal is applied in a 30-micron wear layer and extends the life of the flooring by protecting it from wear due to staining, soiling and scuffing.

FEATURES (data shown are nominal):

Roll Width: 6 ft. (1.8 m)

Roll Length: 60 ft. (18.3 m)

Overall Thickness: 0.08 in. (2.0 mm)

Wear Layer Thickness: 0.02 in. (0.5 mm)

Weight: 0.7 lbs./sq. ft., 240 lbs./roll



Part #: M51  
Color: 51 BLANC



Part #: M52  
Color: 52 VERGE D'OR



Part #: M53  
Color: 53 D'OR



Part #: M54  
Color: 54 GRIS



Part #: M55  
Color: 55 NOIR

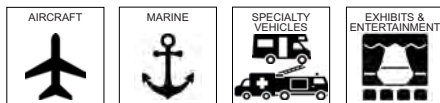


Part #: M56  
Color: 56 BRUN



# SMOOTH

## LONSAND



Utilizing the same color scheme as Lonridge but without the embossing, LONSAND provides a subtler form of slip resistance through a texture that recalls a fine sand paper. Perfect for all interior or semi-exterior applications such as marine and specialty vehicles.

**Lonsand comes exclusively in 8 ft. widths.**

### MEETS FMVSS REQUIREMENTS

FMVSS 302: Flammability of Interior Materials

### FEATURES (data shown are nominal):

Roll Width: 8 ft. (2.4 m)

Roll Length: 60 ft. (18.3 m)

Overall Thickness: 0.080 in. (2.0 mm)

Wear Layer Thickness: 0.031 in. (0.8 mm)

Weight: 0.6 lbs./sq. ft., 295 lbs./roll



Part #: DS830  
Color: 830 CREME



Part #: DS831  
Color: 831 SMOKEY BLACK



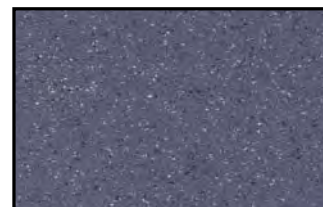
Part #: DS832  
Color: 832 RUSSET



Part #: DS833  
Color: 833 MOCCASIN



Part #: DS834  
Color: 834 MOONDUST



Part #: DS835  
Color: 835 YALE BLUE



LONSAND - 834 MOONDUST  
EMS VEHICLE



## LONSPECK TOPSEAL



## HIGH PERFORMANCE WITH TIMELESS DESIGN

The speckled surface of LONSPECK TOPSEAL easily hides grit and scuffing, while the sanitary seaming contributes to a hygienic environment. The nine therapeutic colors available make Lonspeck an exceptionally flexible option in showrooms, boats, EMS and other specialty vehicles. Topseal formulation is a factory-applied urethane finish that protects the floor, reduces scuffing and simplifies routine maintenance.

FEATURES *(data shown are nominal):*

Roll Width: 6 ft. (1.8 m)

Roll Length: 60 ft. (18.3 m)

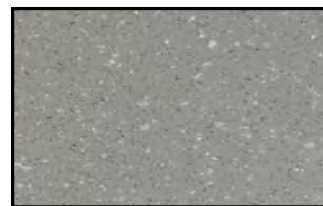
Overall Thickness: 0.08 in. (2.0 mm)

Wear Layer Thickness: 0.028 in. (0.7 mm)

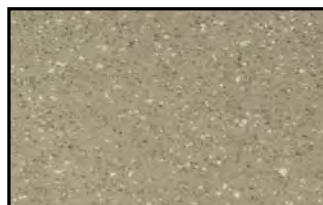
Weight: 0.6 lbs./sq. ft., 225 lbs./roll



Part #: SX111  
Color: 111 TWILIGHT ZONE



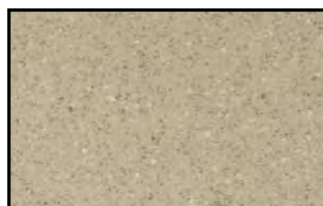
Part #: SX112  
Color: 112 MAGNETIC GRAY



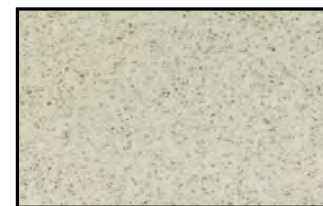
Part #: SX113  
Color: 113 ROCKY BEACH



Part #: SX114  
Color: 114 TAMARIND



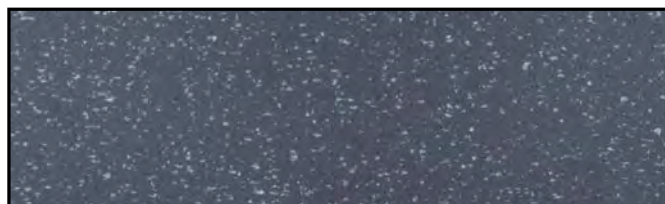
Part #: SX115  
Color: 115 SANDSTORM



Part #: SX116  
Color: 116 WHITE PEPPER



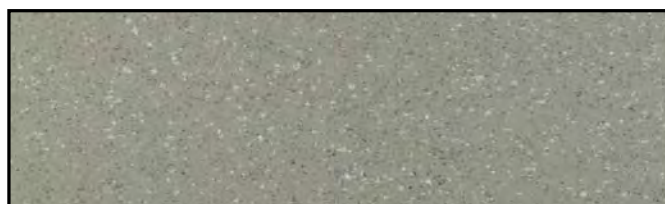
LONSPECK TOPSEAL - 111 TWILIGHT ZONE



Part #: SX117  
Color: 117 HALE NAVY



Part #: SX118  
Color: 118 VANILLA BEAN



Part #: SX119  
Color: 119 PIGEON GRAY



# SMOOTH

## LONSTAGE MT



LONSTAGE MT is a non-glare surface that is ideal for stages and dance floors. It is also suitable for showrooms and “showplace” spaces. Recommended for interior use only, and should not be used where subject to extreme mechanical use.

### FEATURES (data shown are nominal):

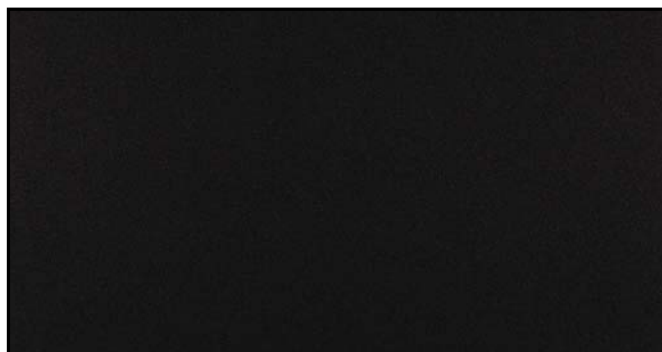
Roll Width: 6 ft. (1.8 m)

Roll Length: 60 ft. (18.3 m)

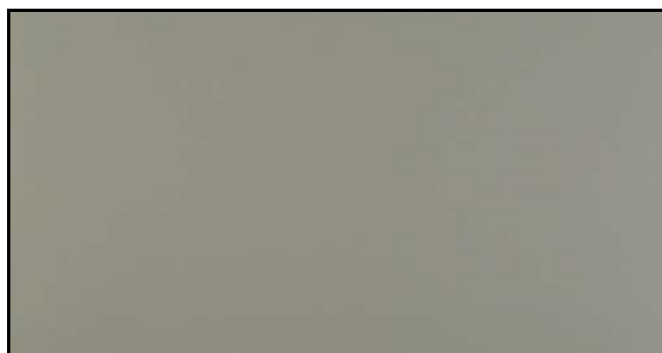
Overall Thickness: 0.080 in. (2.0 mm)

Wear Layer Thickness: 0.014 in. (0.35 mm)

Weight: 0.6 lbs./sq. ft., 230 lbs./roll



Part #: S101  
Color: 101 MATTE BLACK



Part #: S103  
Color: 103 MATTE GRAY

## LONSTAGE UV



### STRIKING and BOLD

LONSTAGE UV has the same bold and slick look as our Lonmetro but a smoother surface. Its ultra-clean style means that Lonstage UV is suitable for showrooms and “showplace” spaces, such as dance and entertainment studios.

*\*Due to the light color of #100 Shiny White, more frequent maintenance procedures are necessary to ensure a long lasting installation. In addition, areas of prolonged UV exposure should be avoided to prevent unwanted discoloration of the flooring.*

### FEATURES (data shown are nominal):

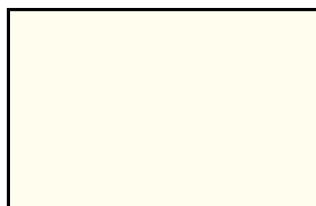
Roll Width: 6 ft. (1.8 m)

Roll Length: 60 ft. (18.3 m)

Overall Thickness: 0.080 in. (2.0 mm)

Wear Layer Thickness: 0.018 in. (0.45 mm)

Weight: 0.7 lbs./sq. ft., 245 lbs./roll



Part #: S100  
Color: 100 SHINY WHITE\*



Part #: S102  
Color: 102 SHINY BLACK

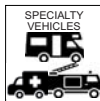


Part #: S104  
Color: 104 SHINY BLUE



Part #: S105  
Color: 105 SHINY RED

## LONWOOD DAKOTA TOPSEAL



## OAK, QUARTER SAWN TIMBER CLASSIC

LONWOOD DAKOTA is a slightly textured sheet that evokes the open grain of oak and the nuance of knot-free, quarter-sawn plank. Lonwood Dakota now comes standard with Lonseal's exclusive Topseal formulation, a factory-applied urethane finish that protects the floor, reduces scuffing and simplifies routine maintenance.

*This product contains partial "boards" at both edges. This selva should be removed to assure an aesthetically pleasing transition from sheet to sheet. The selva width can vary depending on the lot.*

## FEATURES (data shown are nominal):

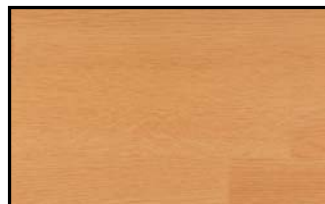
Roll Width: 6 ft. (1.8 m)

Roll Length: 60 ft. (18.3 m)

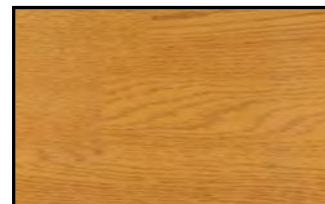
Overall Thickness: 0.080 in. (2.0 mm)

Wear Layer Thickness: 0.020 in. (0.5 mm)

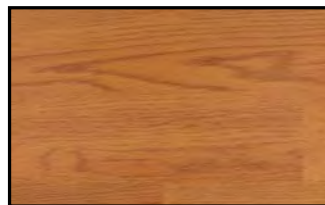
Weight: 0.6 lbs./sq. ft., 230 lbs./roll



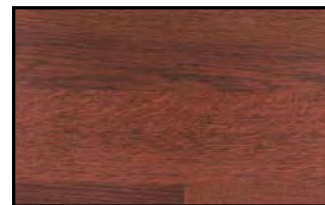
Part #: W7077  
Color: 7077 NATURAL OAK



Part #: W7078  
Color: 7078 AMBER



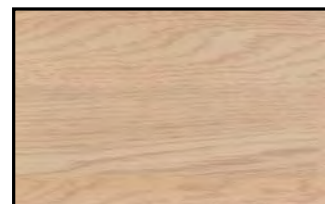
Part #: W7079  
Color: 7079 CHERRY



Part #: W7081  
Color: 7081 BURGUNDY



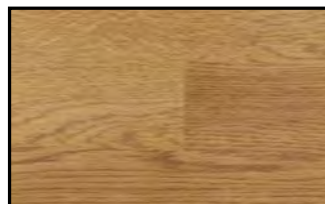
Part #: W7083  
Color: 7083 PLATINUM MIST



Part #: W7084  
Color: 7084 ISLAND WHITE



Part #: W7087  
Color: 7087 EBONY



Part #: W7088  
Color: 7088 PARLOR OAK



Part #: W7089  
Color: 7089 WARM TEA



Part #: W7093  
Color: 7093 MARSHMALLOW



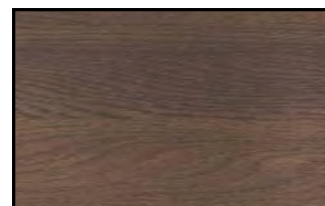
Part #: W7094  
Color: 7094 TOASTED ALMOND



Part #: W7095  
Color: 7095 HONEY CAKES



Part #: W7096  
Color: 7096 PUMPKIN PIE



Part #: W7097  
Color: 7097 HOT CHOCOLATE



# SMOOTH

## LONWOOD MADERA TOPSEAL



### MODERN WIDE PLANK

A wide-plank design in six lustrous colors, LONWOOD MADERA is a resilient sheet vinyl that features detailed graining that elegantly weaves around beautifully-rendered knotting. This extraordinarily realistic look is further enhanced by articulated plank lines resulting in a design that suggests the strength of old-world craftsmanship paired with the crisp, clean lines of contemporary living. Madera's plank lengths are 32" and 16," with a plank width of 4.75"±. Lonwood Madera comes standard with Lonseal's exclusive Topseal formulation, a factory-applied urethane finish that protects the floor, reduces scuffing and simplifies routine maintenance.

#### FEATURES (data shown are nominal):

Roll Width: 6 ft. (1.8 m)

Roll Length: 60 ft. (18.3 m)

Overall Thickness: 0.080 in. (2.0 mm)

Wear Layer Thickness: 0.020 in. (0.5 mm)

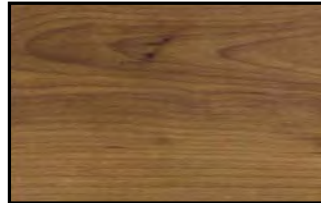
Weight: 0.6 lbs./sq. ft., 225 lbs./roll



Part #: W130  
Color: 130 SHORTBREAD



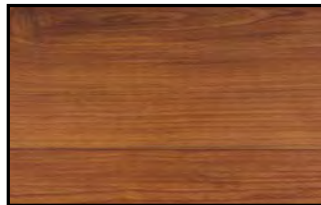
Part #: W131  
Color: 131 PORTOBELLO



Part #: W132  
Color: 132 OREGANO



Part #: W133  
Color: 133 CARAMEL



Part #: W134  
Color: 134 BRANDY



Part #: W135  
Color: 135 COCOA

## LONWOOD MARINE



LONWOOD MARINE is Lonseal's high-performance, slip-resistant marine flooring in teak and holly. Intended for interior spaces, Lonwood Marine comes in both a glossy surface option or with Lonseal's factory-applied urethane finish, Topseal. Both have color coordinating trim.

For similar Marine products that are MED and USCG certified and to see color coordinating trim, please see our LONMARINE® WOOD offerings on page 25.

#### FEATURES (data shown are nominal):

Roll Width: 6 ft. (1.8 m)

Roll Length: 60 ft. (18.3 m)

Overall Thickness: 0.080 in. (2.0 mm)

Wear Layer Thickness: 0.02 in. (0.5 mm)

Weight: 0.6 lbs/sq. ft, 225 lbs./roll



Part #: W72G  
Color: 72G TEAK & HOLLY GLOSS



Part #: W74TS  
Color: 74TS TEAK & HOLLY TOPSEAL

## LONWOOD NATURAL TOPSEAL



SUBTLE, GENTLE PATTERN REPEAT and UNIQUE COLORS

LONWOOD NATURAL pairs the timeless aesthetics of wood with the benefits of high-performance sheet vinyl in colors that range from earthy to quirky. Its soft grain patterning and smooth surface make Lonwood Natural ideal for those who want the warmth of wood with easier maintenance. Lonwood Natural now comes standard with Lonseal's exclusive Topseal formulation, a factory-applied urethane finish that protects the floor, reduces scuffing and simplifies routine maintenance.

**FEATURES** (*data shown are nominal*):

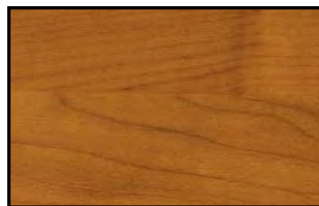
Roll Width: 6 ft. (1.8 m)

Roll Length: 60 ft. (18.3 m)

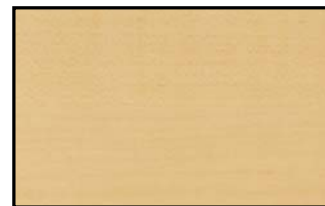
Overall Thickness: 0.080 in. (2.0 mm)

Wear Layer Thickness: 0.020 in. (0.5 mm)

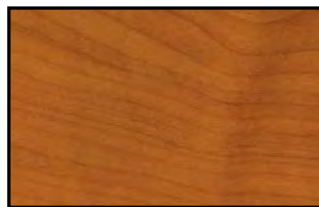
Weight: 0.6 lbs./sq. ft., 225 lbs./roll



Part #: W7452  
Color: 7452 MAPLE SYRUP



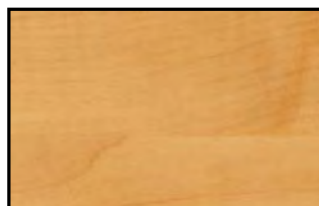
Part #: W7453  
Color: 7453 PRAIRIE



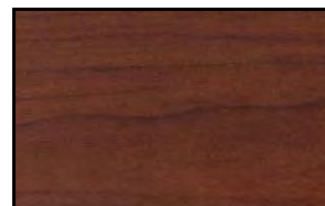
Part #: W7455  
Color: 7455 NUTSHELL



Part #: W7456  
Color: 7456 QUAIL EGGS



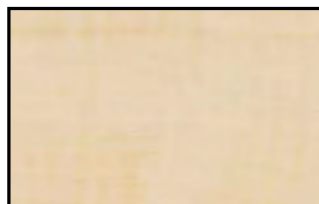
Part #: W7457  
Color: 7457 BUCKWHEAT



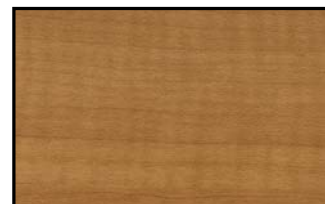
Part #: W7458  
Color: 7458 BRIAR ROOT



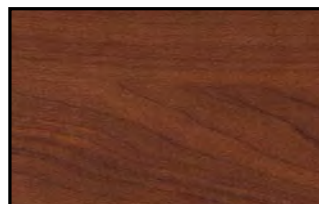
Part #: W7459  
Color: 7459 BARK DUST



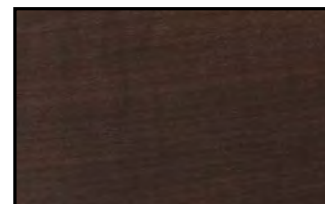
Part #: W7461  
Color: 7461 WHISPER



Part #: W7462  
Color: 7462 GENTLE WIND



Part #: W7463  
Color: 7463 THUNDERSTORM



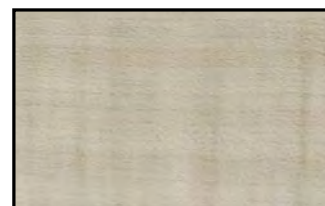
Part #: W7464  
Color: 7464 SUMMER NIGHT



Part #: W7465  
Color: 7465 RAINFALL



Part #: W7466  
Color: 7466 BABBLING CREEK



Part #: W7467  
Color: 7467 SINGING BIRDS



## LONWOOD PERFORMA



ENDURANCE, MULTI-PURPOSE FITNESS FLOORING

LONWOOD PERFORMA features an anti-fatigue, cushioned-step, closed-cell foam-backing that is designed specifically for high-traffic and high-impact activities. A wood-grain sheet, it is ergonomically designed, sound absorbing and helps prevent injuries.

FEATURES *(data shown are nominal)*:

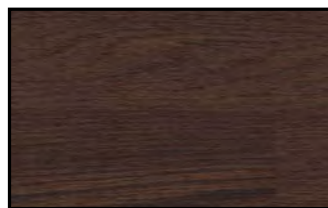
Roll Width: 6 ft. (1.8 m)

Roll Length: 60 ft. (18.3 m)

Overall Thickness: 0.22 in. (5.5 mm)

Wear Layer Thickness: 0.02 in. (0.5 mm)

Weight: 1.3 lbs./sq. ft., 455 lbs./roll



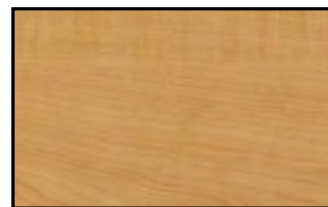
Part #: W547  
Color: 547 SABLE



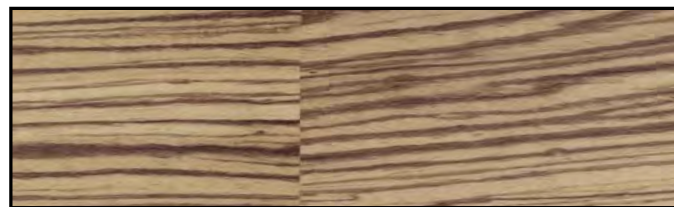
Part #: W548  
Color: 548 OAK



Part #: W549  
Color: 549 SILVER LAKE



Part #: W550  
Color: 550 BUCKWHEAT



Part #: W553  
Color: 553 MOCHA LATTE

## LONWOOD WITH FOAM



Ideal for fitness and gymnasium facilities, LONWOOD WITH FOAM features an anti-fatigue, cushioned-step, closed-cell foam-backing well-suited to high-traffic interiors.

FEATURES *(data shown are nominal)*:

Roll Width: 6 ft. (1.8 m)

Roll Length: 60 ft. (18.3 m)

Overall Thickness: 0.12 in. (3.0 mm)

Wear Layer Thickness: 0.02 in. (0.5 mm)

Weight: .07 lbs./sq. ft., 265 lbs./roll



Part #: W375  
Color: 375 FOAM BUCKWHEAT



Part #: W382  
Color: 382 FOAM GOLDEN OAK

## LONZEBRA TOPSEAL



STUNNING, EXOTIC, & UNIQUE

LONZEBRA TOPSEAL's striated linear pattern is not only visually extraordinary but also serves to mask dirt and other blemishes. The exotic colors and patterning are striking on their own but also have exciting pairing potential with Lonseal's Loneco®, Lonwood Natural and Lonwood Dakota products. The Lonzebra comes standard with Lonseal's exclusive Topseal formulation, a factory-applied urethane finish that protects the floor, reduces scuffing and simplifies routine maintenance.

FEATURES *(data shown are nominal):*

Roll Width: 6 ft. (1.8 m)

Roll Length: 60 ft. (18.3 m)

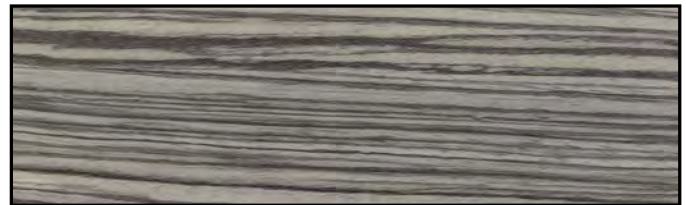
Overall Thickness: 0.080 in. (2.0 mm)

Wear Layer Thickness: 0.020 in. (0.5 mm)

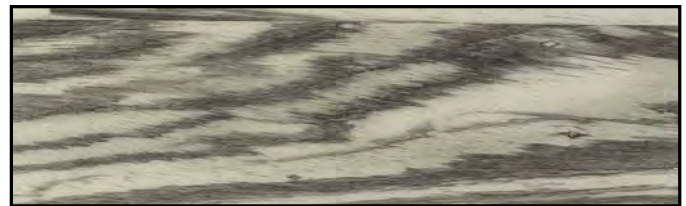
Weight: 0.6 lbs./sq. ft., 220 lbs./roll



Part #: LZ7059  
Color: 7059 FALCON



Part #: LZ7060  
Color: 7060 TWILIGHT



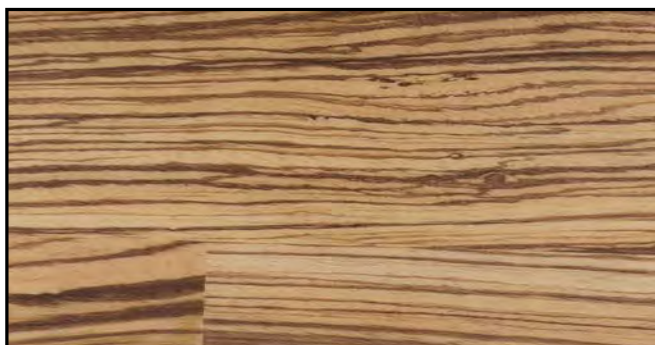
Part #: LZ7061  
Color: 7061 RAVEN



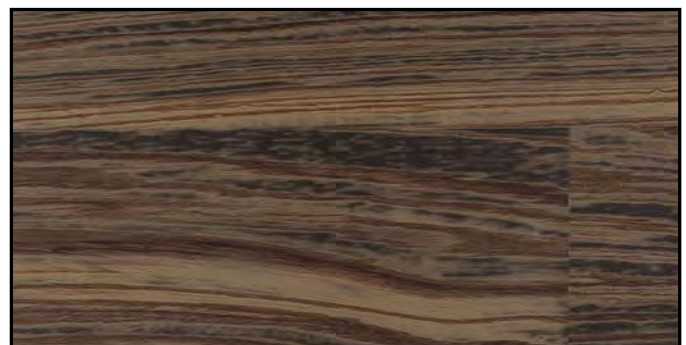
Part #: LZ7063  
Color: 7063 SAVANNA



Part #: LZ7066  
Color: 7066 BARK



Part #: LZ7068  
Color: 7068 AFRICAN SUNSET



Part #: LZ7069  
Color: 7069 SIENNA PLAINS



# PRODUCT CHART

Page	Product Name	Type	AIRCRAFT 	MARINE 	MILITARY 	SPECIALTY VEHICLES 	EXHIBITS & ENTERTAINMENT 	EXTERIOR DECKING 
2	Lonbead	EMBOSSSED	•	•			•	
2	Loncoin I	EMBOSSSED		•		•	•	
3	Loncoin II	EMBOSSSED		•		•	•	
4	Loncoin II Featherweight	EMBOSSSED	•	•	•	•		
5	Loncoin II Flecks	EMBOSSSED		•	•	•	•	
5	Loncoin II Flecks Topseal	EMBOSSSED		•		•	•	
7	Loncoin II Flecks UV	EMBOSSSED		•		•		
7	Loncommodore - MED/USCG	EMBOSSSED		•				
8	Loncompass	EMBOSSSED	•					
9	Londeck	EMBOSSSED		•		•	•	•
10	Londeck Sierra	EMBOSSSED		•		•	•	•
10	Londeck Sol	EMBOSSSED		•		•	•	•
11	Lonforce	EMBOSSSED	•		•			
12	Lonpearl	EMBOSSSED	•	•		•	•	
13	Lonplate I	EMBOSSSED		•		•	•	
13	Lonplate II	EMBOSSSED	•	•	•	•	•	
14	Lonplate Patina	EMBOSSSED		•		•	•	
14	Lonpoint Moonwalk	EMBOSSSED		•		•	•	
15	Lonpolaris	EMBOSSSED	•					
15	Lonridge	EMBOSSSED	•	•		•	•	
16	Loncourt I	SMOOTH					•	
16	Loncourt UV	SMOOTH					•	
17	Londante Topseal	SMOOTH		•		•	•	
20	Londura Featherweight	SMOOTH	•					
21	Loneco® Linen Topseal	SMOOTH		•		•	•	
22	Loneco® Topseal	SMOOTH		•		•	•	
23	Lonfloor Galvanized Topseal	SMOOTH		•		•	•	
23	Lonfloor Plain	SMOOTH					•	
24	Lonfloor Vista	SMOOTH					•	
24	Lonmarine® Stone - MED/USCG	SMOOTH		•		•	•	
25	Lonmarine® Wood - MED/USCG	SMOOTH		•		•	•	
25	Lonmarine® Trim	TRIM		•				
27	Lonmetro UV	SMOOTH					•	
27	Lonmoire Topseal	SMOOTH		•		•	•	
28	Lonsand	SMOOTH	•	•		•	•	
29	Lonspeck Topseal	SMOOTH		•		•	•	
30	Lonstage MT	SMOOTH					•	
30	Lonstage UV	SMOOTH					•	
31	Lonwood Dakota Topseal	SMOOTH		•		•	•	
32	Lonwood Madera Topseal	SMOOTH		•		•	•	
32	Lonwood Marine	SMOOTH		•		•	•	
33	Lonwood Natural Topseal	SMOOTH		•		•	•	
34	Lonwood Performa	SMOOTH					•	
34	Lonwood with Foam	SMOOTH					•	
35	Lonzebra Topseal	SMOOTH		•		•	•	

All technical information including installation manuals, specifications, warranties and maintenance guidelines can be found at [www.lonseal.com](http://www.lonseal.com)



**WARNING:** Cancer and Reproductive Harm  
- [www.P65Warnings.ca.gov](http://www.P65Warnings.ca.gov)

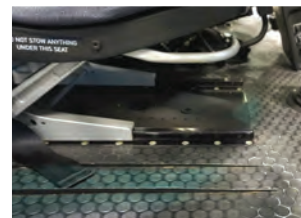
For complimentary samples, please call 800.832.7111.  
Outside the U.S., call +1 310.830.7111

**Lonseal, Inc.**  
928 East 238th Street  
Carson, CA 90745 USA

[www.lonseal.com](http://www.lonseal.com)

v. October 2017

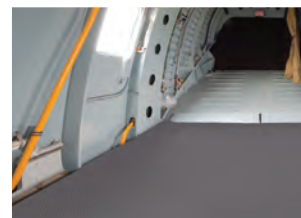
AIRCRAFT



MARINE



MILITARY



SPECIALTY  
VEHICLES



EXHIBITS &  
ENTERTAINMENT



EXTERIOR  
DECKING

