

VERSACAP

ALWAYS FLUSH & ALWAYS A PERFECT MATCH



VERSATRIM[®]
The Leading Molding Brand in North America



MATCHING STAIR SOLUTIONS

by

VERSATRIM®
The Leading Molding Brand in North America

1.866.200.8132

VersaCap™

Always Flush & Always A Perfect Match

WE USE THE ACTUAL FLOOR TO MAKE THE CAP.

The Versacap is used to create matching, flush stair treads & returns that perfectly match your floor to give your staircase an elegant cohesive look.

Lead Time: Approximately 15 Business Days

1 Piece Minimum

THIS CUSTOM PRODUCT IS MADE-TO-ORDER:

Once an order is placed it can not be canceled and the product can not be returned.

Available in Edge and/or Square Depending on Floor Type

Available Profiles

Contact Your Sales Representative for Pricing

VersaCap Edge Tread Edging

Order your flooring plank
to complete your tread!



Plank will be cut to size of the cap

1-7/8"

Plank must be ordered with a cap purchase!

VersaCap Square Tread Edging

Order your flooring plank
to complete your tread!



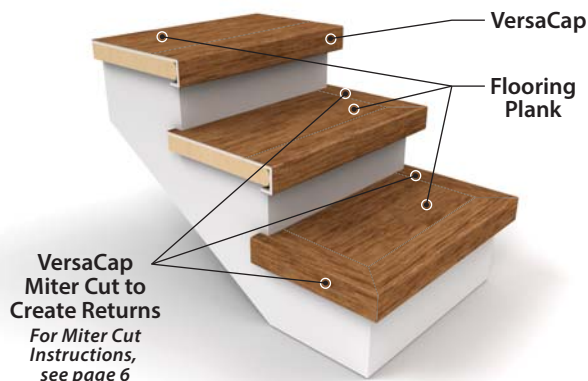
Plank will be cut to size of the cap

2-3/8"

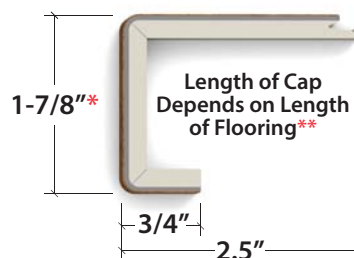
Plank must be ordered with a cap purchase!

FLOOR TESTING REQUIRED BEFORE AVAILABILITY

Technical Information

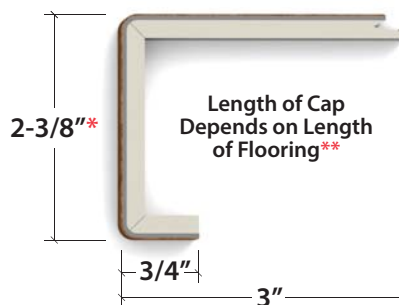


VersaCap Edge



Length of Cap
Depends on Length
of Flooring**

VersaCap Square



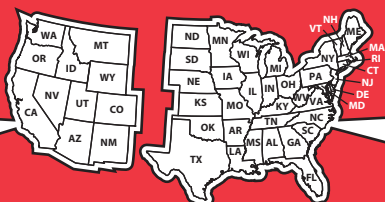
Length of Cap
Depends on Length
of Flooring**

*Since flooring thicknesses vary, to find the inside height dimension of your VersaCap, measure the thickness of your floor, multiply it by 2, and subtract it from the outside height.

**VersaCaps are produced in various lengths depending on the length of the actual floor. However, regardless of the floor length, the maximum length for VersaCaps is 46 inches.

Flat Rate Shipping

Shipping West
\$30.00



Shipping East
\$20.00

Available in Limited Manufacturers.

Contact Your Sales Representative
For More Information!

A surcharge will be applied to your order during the FedEx & UPS Peak Season (September–January). Please inquire about the additional cost during this time.

A \$5.00 Handling Fee Will Be Added to All Orders. An Additional \$8.00 for Residential Addresses

Contact Versatrim for More Information on Manufacturer Options & Pricing

VersaCap is Now Available for the Following Floors:

BRAND	FLOOR NAME	LENGTH
	Anthem Prime PRO 7 PRO 9 Trio	44" 44" 46" 46" 46"
	Evolution Sawatch	46" 44"
	RigidLock Plus RockLock Plus RockLock Plus II	44" 44" 44"
	Adventure II Bella Sera Brilliance Lifestyle Lux Haus II New Standard II New Standard Plus Renewal	44" 46" 44" 44" 46" 44" 44" 44"
	Fury Ravor SP	44" 44"
	Contract VCC 5mm Runway Vital	44" 46" 44"
	Rigid Hybrid Collection	44"
	Advantage Essential Flex Core Distinctions Flex Core Naturals Rigid Core Values	44" 46" 46" 44" 44"
	H2O (Karndean)	46"
	Blockbuster Plus Black Label/Malibu Black Label/Manhattan Built-Rite Enduring Elegance Extreme Cork Gladiator Maverick Rescue Rustic Elegance/Project X Sidewinder Stone Elegance Thrive	44" 46" 32" 46" 44" 34" 44" 44" 44" 44" 44" 44" 44" 44"
	Foundation Foundation Plus Harbor Pinnacle Sinclair Stonecast 6.5 mm Stonecast 7.0 mm Stonecast 7.5 mm	44" 44" 44" 46" 44" 44" 46" 46"
	Coffee House Farmhouse Manor Public House Sicily Series Skyview	44" 44" 46" 46" 46"

BRAND	FLOOR NAME	LENGTH
	CCA K Trade Rigid Knight Tile Rigid Core Korlok Reserve Van Gogh Rigid Core	46" 44" 44" 44" 44"
	PrestG Click	46"
	Carbonado	44"
	Expanse Expanse Tile Incredible	46" 32" 44"
	Exceptional	44"
	Varacore	44"
	Authentic Equity Harbor Plank Rigid Click Now/Rigid Plus Timeless	46" 46" 44" 44" 44"
	Beachview Collection Cityfield Collection Grove Collection Oakley Collection OceanView Collection SeaView Collection Timberland Collection Urbanite Collection Woodlands Collection	44" 44" 44" 44" 44" 44" 44" 44" 44"
	Targhee Collection Tenton Collection	44" 44"

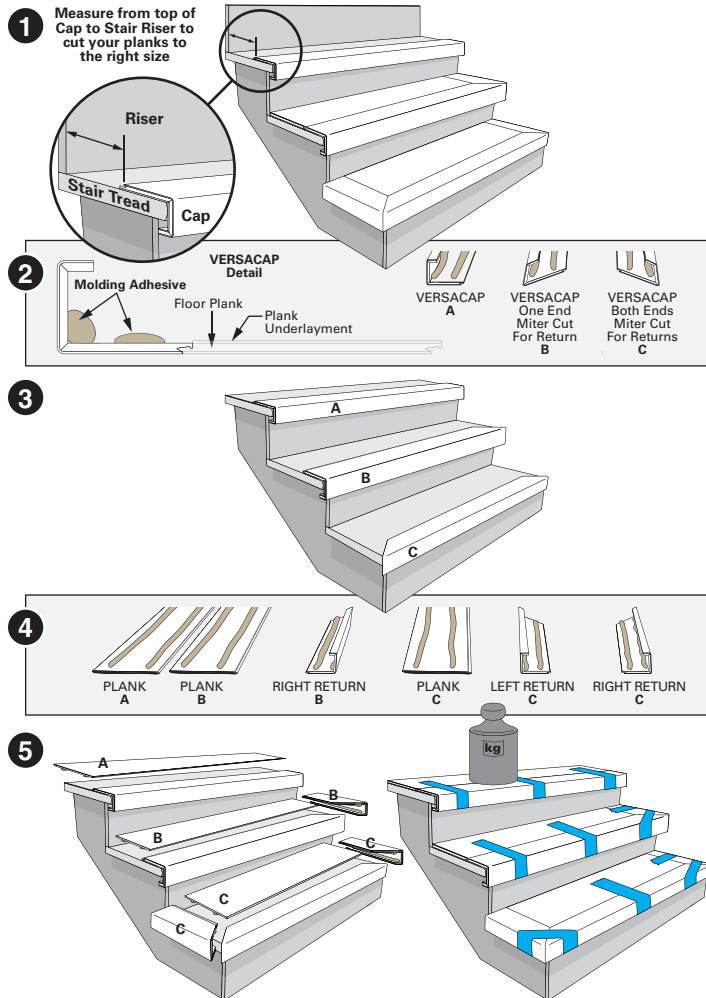
***Don't See Your Floor Listed?
We Add New Floors to Our Collection Daily!***

***Call Your Sales Representative
for More Information***

Basic VersaCap Installation

Versatrim does not recommend that you join two caps together in order to complete one stair nose

Versatrim does not provide custom cuts



CAUTION: Depending on the floor type, the VersaCap may come with padding. If the padding is not securely attached it should be removed from the cap and/or the plank before installing to stair.

NOTE: Small broken areas (less than 1") in the locking system of your Cap will not cause any issues with installation because the cap and floor will be glued down.

Step 1

Clean the staircase from all dust and debris. All wood or concrete stair surfaces must be properly prepared, stable, flat, and free of adhesive residue or anything that may be an adhesive bond breaker. **IMPORTANT:** Installing over existing flooring on stairs is not permitted. Existing flooring must be removed.

Once staircase is clean, measure each stair and cut your planks and caps. If creating returns, use a miter saw set at 45° angles to make the cuts. Dry fit the caps, returns, & planks prior to spreading any adhesive. Leave them in place until ready to glue down.

NOTE: Start at the top of the Stair Case and work your way down. The strategy, as you will see in the steps that follow, will be to glue and staple down the VersaCap first. Then, glue down the plank and/or return(s). Move on to the next stair and repeat Steps 2 to 5.

Step 2

IMPORTANT: The VersaCap does not come with an underlayment. Apply enough adhesive to the broad flat area to make the Caps and Returns level with the floor plank. Turn the first VersaCap over and apply adhesive on the inside corner and a generous amount of Versatrim's Molding Adhesive* on the broad flat area. (See illustration on the left).

Step 3

Place the Versacap on the stair. Position it where you want it.

Clean up any excess adhesive with a damp rag.

Step 4

Make sure the underlayment is firmly and completely attached to the floor plank. If it is not, either remove it or reattach it with PUR adhesive. Next, take the plank and/or return(s) that go with the VersaCap you just fixed on the Stair. Turn them over and apply a generous amount of Molding Adhesive to them. If installing returns, apply glue to the inside corner of the return and then apply adhesive to the broad flat area of the return like you did to the Cap in Step 2. (See illus. at left).

Step 5

Next, place the plank and/or return(s) in place. Clean up any excess adhesive with a damp rag before applying the painters tape.

Use painter's tape to tape the VersaCap to the flooring plank and returns. Place a heavy weight across the seams. Let the Molding Adhesive cure for 48 hours before heavy traffic. Once dry, you can remove painter's tape from stairs.

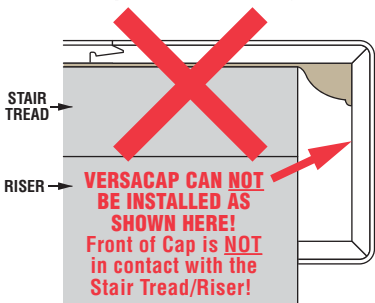
Next, move on to the next stair and repeat Steps 2 to 5.

* For more information, go to: versatrim.com/molding-adhesive

HOW NOT TO INSTALL:

NO-OVERHANG STAIR TREAD

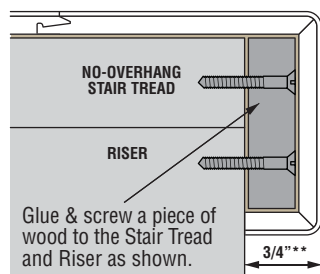
Use Options #1 or #2 at Right



INSTALLATION OPTIONS:

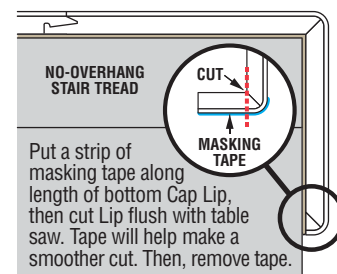
NO-OVERHANG STAIR TREAD

OPTION #1: Piece of Wood Cut to Size and Screwed & Glued in Place



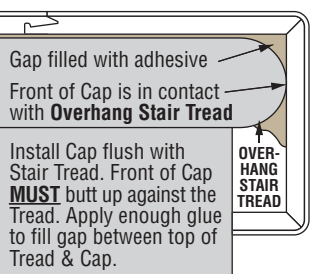
NO-OVERHANG STAIR TREAD

OPTION #2: Cut Bottom Lip of VersaCap so it Lays Flat Against Stair Tread/Riser



OVERHANG STAIR TREAD

Front of Cap is in Contact with Stair Riser



When we machine the planks we change the symmetry of tension and some bowing is to be expected. Here is how you install a slightly bowed VersaCap:

- After you cut your planks and VersaCaps to size, dry fit them to see which caps are bowing. You may see a slight 1 to 2 mm gap either towards the ends of the plank or towards the middle caused by the bowing.
- Glue your VersaCap in place on the step. Then apply glue to the back of the plank. We also advise to put a thin swipe of construction glue into the click system of the floor plank.
- Line up the plank to the VersaCap so that both ends meet.
- Start at one end and snap the plank into place by lining it up with the VersaCaps groove and lowering it down.
- Take a strip of painter's tape and start towards the very top of the flooring plank and end under the lip of the VersaCap, or even on the stair riser below the cap, pulling tightly so that the VersaCap and plank are held snug in place by the tape.
- Work your way down to the other end, pressing firmly and using your body weight to push the flooring groove into the VersaCap until it snaps into place.
- Then add strips of painter's tape to the other end and to the center of the tread to hold the VersaCap in place until the glue dries. Apply weights.

Cutting VersaCap to Create Returns

Versatrim does not provide custom cuts

Make sure to use safety goggles and thick gloves while using saw and handling the blade

Step 1 – MAKE TEST CUTS ON SCRAP 2x4

IMPORTANT: Make sure the bevel angle is set to **ZERO (A)**.

We highly recommend you do a test cut on 2 scrap pieces of 2x4 to make sure your cuts line up. Set the miter angle to **45 degrees** for the first cut (B). Cut the 2x4 (C).

Then change angle of miter cut to **45 degrees** in the other direction (D). Cut the other piece of 2x4.

Line up ends of the 2x4s to form a corner (E). Check the pieces to see if they line up correctly with **no gap** on the top or front view (F).

Step 2 – CUT YOUR VERSACAP

IMPORTANT: Use a scrap 2x4 piece to set VersaCap on while you make the cuts (G). This will keep them level as you cut.

Set the miter angle to **45 degrees**. Cut the VersaCap (H).

REMINDER: Always wear safety goggles when using the saw

IMPORTANT: Hold the VersaCap extremely tight, otherwise it will pull in the direction of the blade and your cut will be off

Change miter angle to **45 degrees** in the other direction (I). Cut the other piece that you are using for the Return. Again, **make sure you hold the VersaCap extremely tight. Don't let it move while you make the cut.**

Check the Cap & Return to see if they line up correctly with **no gap** on the top or front view (J).

Step 3 – APPLYING CAP & RETURN TO THE STAIRS

IMPORTANT: The VersaCap does not come with an underlayment. Apply enough adhesive to the broad flat area to make the Caps & Returns level with the floor plank.

After wiping the Cap & Return clean from debris, test the fit on your stairway. Make sure there is no gap between them (M).

After you test the fit, run thick lines of **Versatrim's Molding Adhesive*** along the inside corner and along the broad flat surface of the VersaCap (N).

Put the Cap in place, pressing down firmly to make sure it is in contact with the stair (O). Make sure the edge is square.

Clean up any excess adhesive with a damp rag.

IMPORTANT: Make sure the underlayment is firmly and completely attached to the floor plank. If it is not, either remove it or reattach it with PUR adhesive.

Next, take the plank and Return that go with the VersaCap you just fixed on the Stair. Turn them over and apply a generous amount of **Molding Adhesive** to them. Apply glue to the inside corner of the return and then apply adhesive to the broad flat area.

Next, place the plank and Return in place (P).

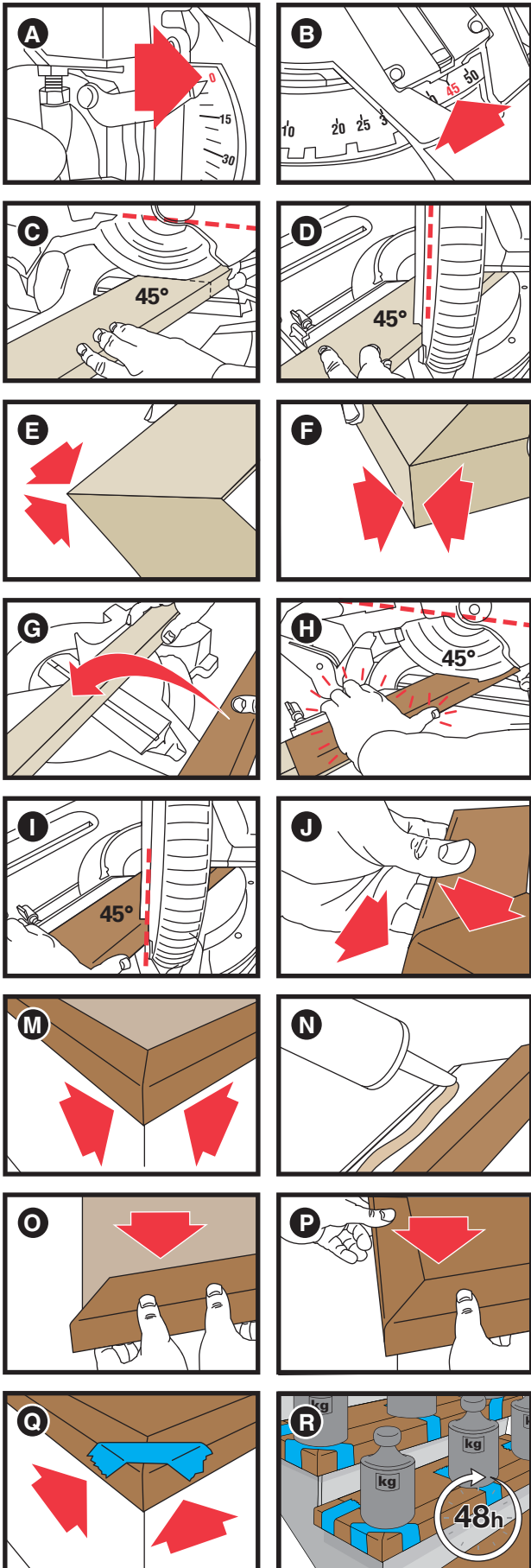
Clean up any excess adhesive with a damp rag before applying the painters tape.

While pressing both ends firmly together, stretch a piece of painter's tape tightly across the corner edge to keep the moldings from separating while the adhesive cures (Q).

Place a heavy weight across the seams (R).

Let the Molding Adhesive cure for 48 hours before heavy traffic. Once dry, you can remove painter's tape from stairs.

*** For more information, go to: versatrim.com/molding-adhesive**



1.866.200.8132

101 Eastern Minerals Road, Henderson, NC 27537 USA
Email: orders@versatrim.com • Fax: 252.430.8801
www.versatrim.com

Company Name: _____
Contact Name: _____
Address: _____
City/State/Zip: _____
Phone: _____ Fax: _____
Email: _____

Date: _____
Purchaser: _____
Purchase Order #: _____
Sidemark: _____

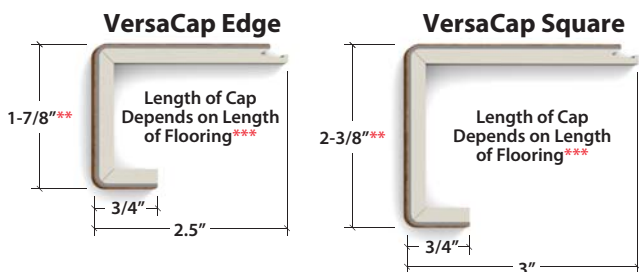
VERSACAP ORDER FORM

Email Back to: orders@versatrim.com
or FAX BACK TO: (252) 430-8801

FLOOR TESTING IS REQUIRED BEFORE AVAILABILITY

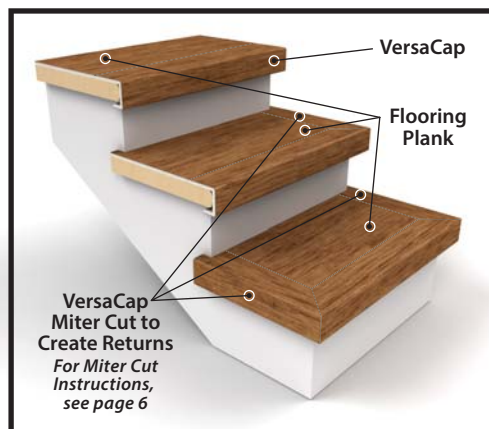
Floor Brand Name:			
Floor Color Name:		SKU Number:	

VersaCap comes in 2 shapes: Edge & Square*



**Profile Shape Availability Depends on Floor Type.*

**Since flooring thicknesses vary, to find the inside height dimension of your VersaCap, measure the thickness of your floor, multiply it by 2, and subtract it from the outside height.
***VersaCaps are produced in various lengths depending on the length of the actual floor. However, regardless of the floor length, the maximum length for VersaCaps is 46 inches.



<p>FACING STAIR WAY</p> <p>VersaCap Edge</p> <p><i>Length of Cap Depends on Length of Flooring</i></p>	VersaCap Edge – Tread Edging		
	Quantity:	Price:	Subtotal:

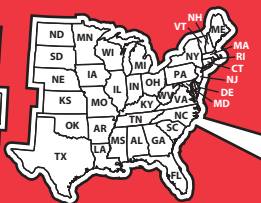
<p>FACING STAIR WAY</p> <p>VersaCap Square</p> <p><i>Length of Cap Depends on Length of Flooring</i></p>	VersaCap Square – Tread Edging		
	Quantity:	Price:	Subtotal:

<p><i>Plank is Cut to the Size of the VersaCap</i></p> <p>Flooring Plank</p> <p><i>Plank only available with a cap purchase!</i></p>	Flooring Plank to Complete Your Tread		
	Quantity:	Price:	Subtotal:

****FLAT RATE SHIPPING

Additional \$8 for Residential Addresses

Shipping West
\$30.00



Shipping East
\$20.00

A surcharge will be applied to your order during the FedEx & UPS Peak Season (September-January). Please inquire about the additional cost during this time.

A \$5.00 Handling Fee Will Be Added to All Orders.

SUBTOTAL:	
SHIPPING****: See Flat Rate Chart at Left & Choose either East OR West Below: <input type="checkbox"/> EAST <input type="checkbox"/> WEST	
HANDLING FEE	\$5.00
GRAND TOTAL:	

Custom Product/Non-Returnable

1 Piece Minimum

1 Cap = 1 Plank

*Customer is expected to accept & pay for a 10% over or under run on VersaCap orders.
To account for shipping or production issues/damages, please provide at least 20% extra flooring for your order.*

If customer provides the flooring, unused material or waste will not be returned.

Lead Time: Approximately 15 Business Days Once Flooring is Received

**Contact Your Versatrim
Inside Sales Representative
For Floor Testing
Information & Process:**

1.866.200.8132

sales@versatrim.com



MOLDING ADHESIVE

Early Grab, Fast-Curing Formula • High Strength, Waterproof • Extremely Low VOC

By
VERSATRIM®
The Leading Molding Brand in North America

The ONLY Molding Adhesive You'll Need!

This wet-set, early-grab, fast-curing formula is low-odor and easy-to-clean, leaving no surface residue or ghosting, even once dried. It provides an excellent bond for moldings.

**10 oz.
Cartridge**

**Contact Your
Sales Representative
for Pricing**

**To Order,
Call Your Sales
Representative**

For More Information, Visit:
Versatrim.com

Ships FREE with Any Molding Order*

*\$8.50 Flat rate shipping for adhesive only orders. For lower 48 Continental United States only.
Please inquire with your Sales Representative for Alaska, Hawaii, or any other freight quotes.

VersaCap Samples

**FREE 6" Sample of
VersaCap Edge**

or

VersaCap Square

Free to Flooring Businesses ONLY

**FREE 9x9" Sample
Display**

Featuring:

VersaCap Square

Free to Flooring Businesses ONLY

6" Samples

**VersaCap
Edge**

**VersaCap
Square**

**9x9" Sample
Displays**

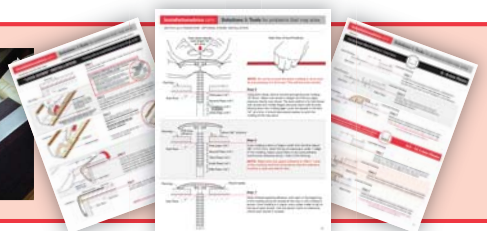
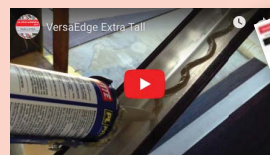
**VersaCap
Square**

If you are interested
in receiving a sample,
Email: sales@versatrim.com

**Contact Your Sales
Representative for Details**

**Need Help Installing? Go to:
www.installationadvice.com**

This website is provided as a convenience to our customers for simple Versatrim step-by-step installation instructions as PDFs and easy to follow videos.



*The installation instructions shown on this page are suggestions of how to install our moldings. Versatrim does not assume responsibility for any product failure or liability due to installations that are in violation of the flooring manufacturer's installation guidelines and/or warranties.



VersaCap Limited Lifetime Residential Warranty

Versatrim® provides the following conditional limited warranty of its **Versatrim** VersaCap for the lifetime of the original purchaser:

- The glue joints on the VersaCap will not come apart during normal residential use.
- We do not warrant any of the floors performance or quality.

The Versatrim limited warranty of its **Versatrim** VersaCap is made subject to the following conditions:

1. The VersaCap must be installed properly in accordance with Versatrim installation instructions. The instructions may be obtained through a retailer or at www.installationadvice.com
2. The VersaCap must be in its original installation and purchased by the first consumer purchaser. Proof of purchase (store Receipt) is required.
3. The VersaCap must be used only indoors.
4. The limited warranty does not apply to water damage, including but not limited to water damage caused by flooding, standing water (water that remains on the VersaCap longer than 5 minutes), leaking pipes, household mechanical failures, appliance leaks, pet urine or any other type of exposure to moisture, humidity or extreme temperature.
5. This limited warranty does not cover variations of color shade or texture of the VersaCap you purchase from those shown on samples or photographs.
6. This limited warranty covers replacement of the defective product or a refund of the original purchase price, at the option of Versatrim. It does not cover the cost of installation, freight or any consequential damages.

EXCEPT AS SET FORTH HEREIN, THERE ARE NO EXPRESS OR IMPLIED WARRANTIES MADE BY VERSATRIM COVERING THIS PRODUCT.

The overall stain and wear resistance of **Versatrim** VersaCap is excellent and most spills will wipe off quickly and easily with a clean white cloth. Please feel free to contact our company with any additional questions or concerns.

Important Tips:

- Do not use soap-based detergents on your VersaCap, as these may leave a dull finish.
- Do not use abrasive cleaners, steel wool or scouring powder, as these may scratch your VersaCap.
- Never wax, polish, sand or lacquer your VersaCap.
- If needed, occasionally clean with a cloth or mop (micro-fiber or terrycloth hooded) slightly moistened with a special cleaner made specifically for the type of flooring used.

If you have a warranty claim....

- Contact us and describe the problem. In many instances, we can provide you with a quick solution to correct the situation.
- If you need additional assistance or wish to file a claim, simply call **Versatrim** Customer Care at 1-866-200-8132. Proof of purchase is necessary to verify all warranty claims.
- Our representatives will provide you with helpful information to address your concern, or walk you through the easy steps to file a claim. We will make every effort to ensure that your claim is processed quickly and fairly.
- You may also write to us at: Attn: Claims Department
101 Eastern Minerals Road
Henderson, NC 27537 USA
- Or email your claim to: support@versatrim.com

DISCLAIMERS: Walking is an enormously complex activity. Significant factors that directly affect slip resistance properties are; the material type of both shoe sole and floor covering, roughness, and surface structure of floor covering, contaminants, the walker's weight, age, gait, fitness, alertness, and vision. Values of acceptable SCOF (dry) or DCOF (wet) generally used within the flooring industry are published by other parties. While Versatrim, LLC has independently tested our transitions, it does not purport to address any safety concerns of slip resistance, the accuracy of any test method, safety threshold, or the measuring apparatus (tribometers). Another important factor outside of our control is how the floor covering is maintained, therefore, no warranty for any slip resistance properties can be provided.

NOTE: Walking on any LVT/LVP in socks or similar is not recommended, especially on stairs.

MATCHING STAIR SOLUTIONS

ALWAYS FLUSH & ALWAYS A PERFECT MATCH



VersaCap
Edge

1-7/8" Height

VersaCap
Square

2-3/8" Height



MADE IN THE USA

Toll Free: 866.200.8132 • Versatrim LLC, 101 Eastern Minerals Road, Henderson, NC 27537 USA • Email: sales@versatrim.com • www.versatrim.com

0959-5/23 NP